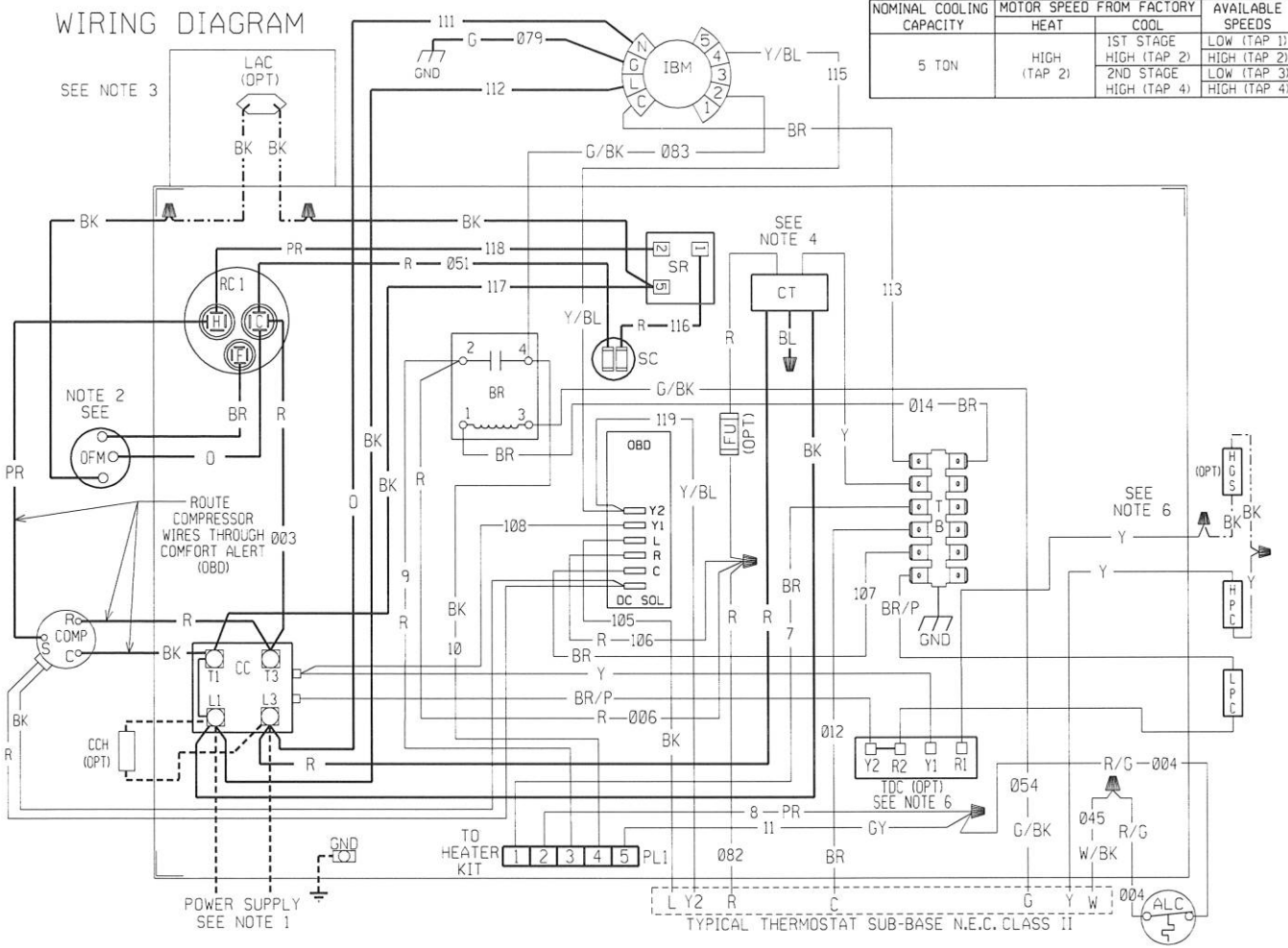
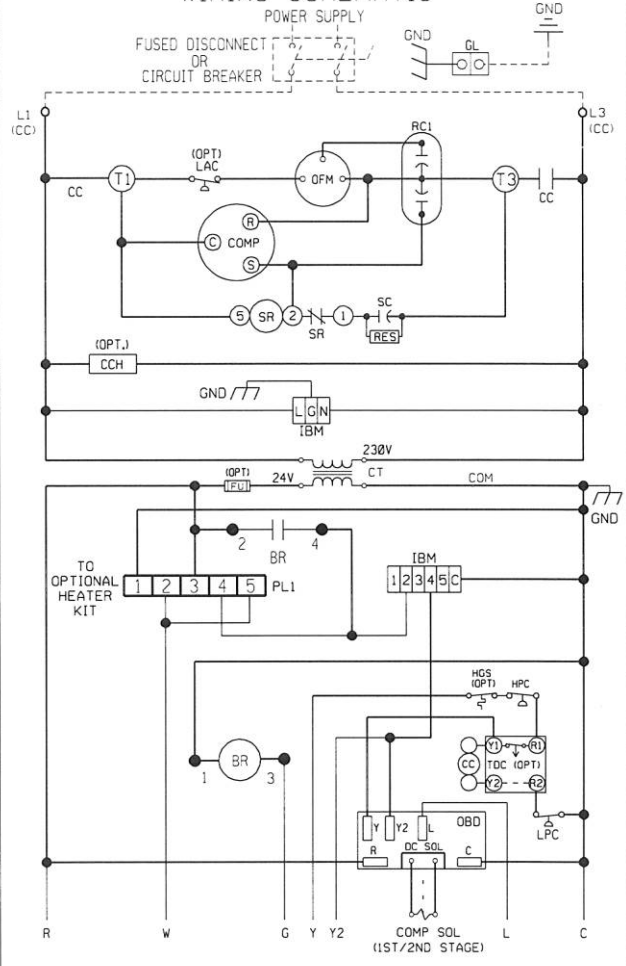


# WIRING DIAGRAM



NOMINAL COOLING CAPACITY	MOTOR SPEED FROM FACTORY	AVAILABLE SPEEDS
5 TON	HIGH (TAP 2)	COOL
		1ST STAGE HIGH (TAP 2)
		2ND STAGE HIGH (TAP 4)
		LOW (TAP 3)

# WIRING SCHEMATIC



## COMPONENT CODE

ALC	AUX. LIMIT CONTROL	LAC	LOW AMBIENT COOLING CONTROL
BR	BLOWER RELAY	LPC	LOW PRESSURE CONTROL
CC	COMPRESSOR CONTACTOR	OBD	ON-BOARD DIAGNOSTICS
CCH	CRANKCASE HEATER	OFM	OUTDOOR FAN MOTOR
COMP	COMPRESSOR	OPT	OPTIONAL
CT	CONTROL TRANSFORMER	PL	PLUG
FU	FUSE	RC	RUN CAPACITOR
GND	GROUND	SC	START CAPACITOR
HGS	HOT GAS SENSOR	SR	START RELAY
HPC	HIGH PRESSURE CONTROL	TB	TERMINAL BLOCK
IBM	INDOOR BLOWER MOTOR	TDC	TIME DELAY CONTROL
		▲	WIRE NUT

## NOTES:

- CONNECTORS SUITABLE FOR USE WITH COPPER CONDUCTORS ONLY.
- COMPRESSOR MOTOR THERMALLY PROTECTED.
- IF LAC IS NOT USED, CONNECT BLACK WIRE FROM OFM TO WIRE NUT FROM CC
- TRANSFORMER FACTORY WIRED FOR 230 VOLTS. USE RED AND BLUE LEADS FOR 208 VOLTS.
- SEE FUSE LABEL ON CONTROL BOX COVER FOR FUSE SIZING AND CLASSIFICATION.
- BROWN AND YELLOW WIRES ARE CONTINUOUS IF OPTIONAL LIMITS AND/OR TDC ARE NOT PRESENT.

## WIRING INFORMATION

LINE VOLTAGE  
 -FACTORY STANDARD  
 -FACTORY OPTION  
 -FIELD INSTALLED  
 LOW VOLTAGE  
 -FACTORY STANDARD  
 -FACTORY OPTION  
 -FIELD INSTALLED  
 REPLACEMENT WIRE  
 -MUST BE THE SAME SIZE AND TYPE OF INSULATION AS ORIGINAL (105 C.MIN.)  
**WARNING**  
 -CABINET MUST BE PERMANENTLY GROUNDED AND CONFORM TO I.E.C., N.E.C., C.E.C., NATIONAL WIRING REGULATIONS, AND LOCAL CODES AS APPLICABLE.

## WIRE COLOR CODE

BK	BLACK	O	ORANGE
BR	BROWN	PR	PURPLE
BL	BLUE	R	RED
G	GREEN	W	WHITE
GY	GRAY	Y	YELLOW

**ELECTRICAL WIRING DIAGRAM**  
**5.0 TON**  
**PACKAGE AIR CONDITIONER**  
**W/X-13 BLOWER MOTOR**  
 1 PH, 208/230 VOLT

DR. BY	APP. BY	DATE	DWG. NO.	REV
JRJ	<i>Kmo</i>	11-9-05	90-23637-13	09