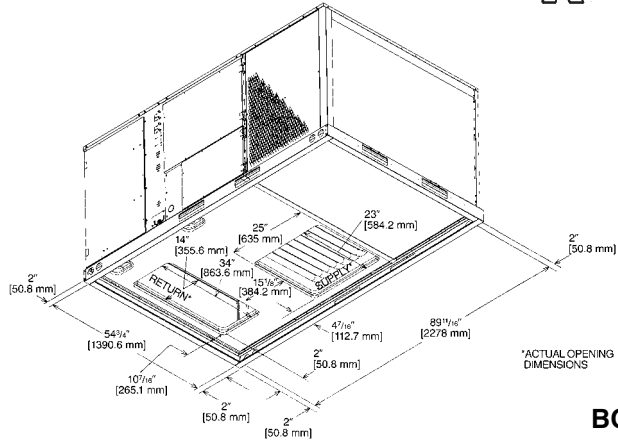


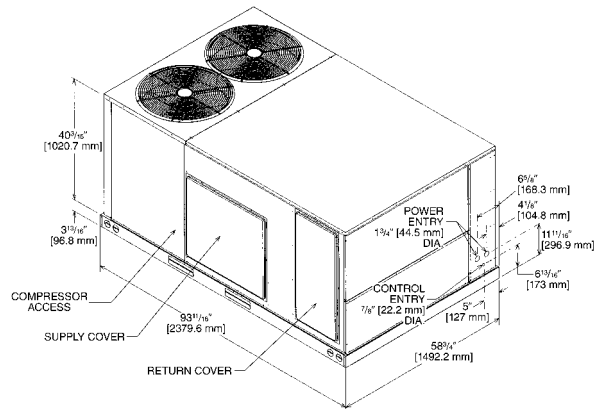
SUBMITTAL SHEET FOR PACKAGE AIR CONDITIONER UNITS: RLKL-B WITH CAPACITIES FROM 7.5-12.5 TONS [26.4-44.0 kW]

R-410A

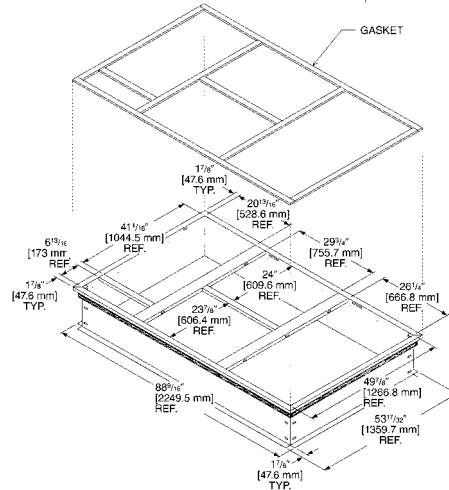
JOB NAME _____
 CONTRACTOR _____
 ENGINEER _____
 LOCATION _____
 ORDER NO. _____
 SUBMITTED FOR APPROVAL RECORD
 SUBMITTED BY _____
 DATE _____
 UNIT DESIGNATION _____
 MODEL NO. _____



BOTTOM VIEW



**ROOFCURB
INSTALLATION**



**Roofcub Includes
Insulation Panels**

[] Designates Metric Conversions

UNIT DATA COOLING PERFORMANCE

TOTAL CAPACITY* MBH
 SENSIBLE CAPACITY* MBH
 EFFICIENCY (at AHRI) IEER
 PART LOAD EFFICIENCY IPLV
 AMBIENT DB TEMP °F
 ENTERING DB TEMP °F
 ENTERING WB TEMP °F
 LEAVING DB TEMP °F
 LEAVING WB TEMP °F
 TOTAL POWER INPUT kW
 ELEVATION FT
 SOUND POWER DBELS

HEATING PERFORMANCE

ELECTRIC HEAT CAPACITY kW

SUPPLY AIR BLOWER PERFORMANCE

SUPPLY AIR CFM [L/s]
 OUTSIDE AIR CFM [L/s]
 EXTERNAL STATIC PRESSURE IWG
 DUCT CONNECTION LOCATION
 BLOWER SPEED RPM
 MOTOR RATING HP [W]
 BRAKE HORSEPOWER BHP
 POWER INPUT REQUIREMENT kW

ELECTRICAL DATA

POWER SUPPLY Hz
 MINIMUM CIRCUIT AMPACITY AMPS
 MAXIMUM OVERCURRENT DEVICE
 FUSE SIZE AMPS
 HACR CIRCUIT BREAKER AMPS

DIMENSIONS & WEIGHT

HEIGHT _____ IN WIDTH _____ IN DEPTH _____ IN
 TOTAL WEIGHT LBS [kg]
 (including factory options)

CLEARANCES

FRONT 48" [1219 mm]	BACK 18" [457 mm]
BOTTOM 0"	TOP 60" [1524 mm]
LEFT SIDE 18" [457 mm]	36" [914 mm]
RIGHT SIDE (condenser end)	18" [457 mm]



"Proper sizing and installation of equipment is critical to achieve optimal performance.
Ask your Contractor for details or visit www.energystar.gov."

**FEATURES FOR PACKAGE AIR CONDITIONER
7.5-12.5 TONS NOMINAL TONS [26.4-44.0 kW]**

- R-410A HFC refrigerant.
- Complete factory charged, wired and run tested.
- Scroll compressors with internal line break overload and high-pressure protection.
- Single stage compressor. (7¹/₂, 10).
- Dual compressor (12¹/₂).
- Convertible airflow.
- Fixed restrictor refrigerant metering (7¹/₂, 10).
- TXV refrigerant metering (12¹/₂).
- High Pressure and Low Pressure/Loss of charge protection standard on all models.
- Solid Core liquid line filter drier on each circuit.
- Single slab, single pass designed evaporator and condenser coils facilitate easy cleaning for maintained high efficiencies.
- Cooling operation up to 125 degree F ambient.
- Foil faced insulation encapsulated throughout entire unit minimizes airborne fibers from the air stream.
- Slide Out Indoor fan assembly for added service convenience.
- Powder Paint Finish meets ASTM B117 steel coated on each side for maximum protection. G90 galvanized.
- One piece top cover and one piece base pan with drawn supply and return opening for superior water management.
- Forkable base rails for easy handling and lifting.
- Single point electrical connections.
- Internally sloped slide out condensate pan conforms to ASHRAE 62 standards.
- High performance belt drive motor with variable pitch pulleys and quick adjust belt system.
- Permanently lubricated evaporator, condenser and gas heat inducer motors.
- Condenser motors are internally protected, totally enclosed with shaft down design.
- 2 inch filter standard with slide out design.
- 24 volt control system with resettable circuit breakers.
- Colored and labeled wiring.
- Copper tube/Aluminum Fin Indoor Coils.
- Molded compressor plug.
- Supplemental electric heat provides 100% efficient heating.
- Microchannel Outdoor Coils.

[] Designates Metric Conversions

ACCESSORIES

- | | | |
|------------------------------|-----------------------------|--------------------------|
| Economizers | Condenser Coil Guards | <input type="checkbox"/> |
| With Single Enthalpy | Roofcurbs | <input type="checkbox"/> |
| With Dual Enthalpy | Low Ambient Control | <input type="checkbox"/> |
| CO ₂ Sensor | Electric Heater Kits | <input type="checkbox"/> |
| Fresh Air Dampers | Concentric Diffuser | <input type="checkbox"/> |
| Manual | Roofcurb Adapters | <input type="checkbox"/> |
| Motorized | High Pressure Control | <input type="checkbox"/> |
| | Low Pressure Control | <input type="checkbox"/> |

NOTES

Before proceeding with installation, refer to installation instructions packaged with each model, as well as complying with all Federal, State, Provincial, and Local codes, regulations, and practices.

Rheem Sales Company, Inc.
P.O. Box 17010, Fort Smith, AR 72917

"In keeping with its policy of continuous progress and product improvement, Rheem reserves the right to make changes without notice."