

SUBMITTAL DATA: PLA-A42BA4 & PUZ-A42NHA5 (-BS)

42,000 BTU/H CEILING CASSETTE HEAT PUMP SYSTEM

Job Name:	Location:	Date:
Purchaser:	Engineer:	
Submitted to:	For <input type="checkbox"/> Reference <input type="checkbox"/> Approval <input type="checkbox"/> Construction	
System Designation:	Schedule No.:	



Indoor Unit: PLA-A42BA4



Outdoor Unit: PUZ-A42NHA5 (-BS)

GENERAL FEATURES

- Compact side-discharge outdoor unit
- Quiet operation—indoor and outdoor units
- Built-in drain lift mechanism for condensate removal; lifts to 33-7/16"
- Wide air flow pattern for better air distribution
- Auto wave airflow in heating mode—unit independently cycles through horizontal and vertical positions for more even heat distribution
- Independent vane adjustment
- Automatic fan speed control
- Limited warranty: five years parts and seven years compressors

UNIT OPTION

- Standard Model.....PUZ-A42NHA5
- Sea Coast (BS) Model.....PUZ-A42NHA5-BS

ACCESSORIES

Indoor Unit

- i-see Sensor Corner Panel (PAC-SA1ME)
- Multi-function Casement (PAC-SH53TM)
- Air Outlet Shutter Plates (PAC-SH51SP)
- High-efficiency [MERV 10] Filter (PAC-SH59KF; req. PAC-SH53TM)

Outdoor Unit

- Drain Pan (PAC-SG64DP)
- Drain Socket (PAC-SH71DS-E)
- Three-pole Disconnect Switch (TAZ-MS303)
- Wind Baffle (One Piece)* (WB-PA2)
- Air Outlet Guide (One Piece)* (PAC-SG59SG)
- Mounting Base (DSD-400N)
- Mounting Pad (ULTRILITE2)
- Wall-mounting Brackets (CWMB1)

*PUY(Z)-A42NHA5 requires two outlet guides or wind baffles for installation.

Controller Options

- Wireless Wall-mounted Remote Controller Kit (MHK1)**
 - Portable Central Controller (MCCH1)**
 - Outdoor Air Sensor (MOS1)**
 - Wired Wall-mounted Controller (PAR-31MAA)**
 - Simple MA Remote Controller (PAC-YT53CRAU)**
- **See Submittal for information on each option.
- M-NET Adapter (PAC-SF81MA)
 - CN51 Connector for Multiple Remote Controller Adapters/Duct Fan Controller (PAC-725AD)
 - CN32 Connector for Remote On/Off (PAC-715AD)
 - Remote Temperature Sensor (PAC-SE41TS)
 - Remote Operation Adapter - Display and On/Off (PAC-SF40RM)
 - Hand-held Wireless Remote Controller (PAR-FL32MA; req. PAR-SA9FA-E)
 - Wireless Signal Receiver Module (PAR-SA9FA-E)
 - Lockdown Bracket for Hand-held Controller (RCMKP1CB)
 - Control/Service Tool (PAC-SK52ST)

SEACOAST PROTECTION

- External Outer Panel: Phosphate coating + Acrylic-Enamel coating
- Fan Motor Support: Epoxy resin coating (at edge face)
- Separator Assembly ; Valve Bed: Epoxy resin coating (at edge face)
- Screws (used outer side): Zinc nickel coating 5µm + Polyvinylidene chloride coating

"Blue Fin" treatment is an anti-corrosion treatment that is applied to the condenser coil to protect it against airborne contaminants..



SPECIFICATIONS: PLA-A42BA4 & PUZ-A42NHA4 (-BS)

Cooling*

Rated Capacity 42,000 Btu/h
 Minimum Capacity 18,000 Btu/h
 SEER 14.4 Btu/h/W
 EER 9.1 Btu/h/W
 Total Input 4,600 W

Heating at 47°F*

Rated Capacity 45,000 Btu/h
 Minimum Capacity 18,000 Btu/h
 HSPF 9.3 Btu/h/W
 COP 2.96
 Total Input 4,450 W

Heating at 17°F*

Rated Capacity 30,000 Btu/h
 Total Input 4,300 W
 COP 2.05

* Rating Conditions per AHRI Standard

Cooling | Indoor: 80° F (27° C) DB / 67° F (19° C) WB
 Cooling | Outdoor: 95° F (35° C) DB / 75° F (24° C) WB
 Heating at 47° F | Indoor: 70° F (21° C) DB / 60° F (16° C) WB
 Heating at 47° F | Outdoor: 47° F (8° C) DB / 43° F (6° C) WB
 Heating at 17° F | Indoor: 70° F (21° C) DB / 60° F (16° C) WB
 Heating at 17° F | Outdoor: 17° F (-8° C) DB / 15° F (-9° C) WB

Electrical Requirements

Power Supply 208 / 230V, 1-Phase, 60 Hz
 Recommended Fuse/Breaker Size 30 A

Voltage

Indoor - Outdoor S1-S2 AC 208 / 230V
 Indoor - Outdoor S2-S3 DC ±24V

OPERATING CONDITIONS

		Indoor Intake Air Temp.	Outdoor Intake Air Temp.
Cooling	Maximum	95° F (35° C) DB 71° F (22° C) WB	115° F (46° C) DB
	Minimum	67° F (19° C) DB 57° F (14° C) WB	0° F** (-18° C) DB
Heating	Maximum	80° F (27° C) DB 67° F (19° C) WB	70° F (21° C) DB 59° F (15° C) WB
	Minimum	70° F (21° C) DB 60° F (16° C) WB	12° F (-11° C) DB 10° F (-12° C) WB

** With optional wind baffle accessory installed. If not installed, the minimum temperature will be 23° F (-5° C) DB.

Indoor Unit

MCA 2 A
 Fan Motor (ECM) 1.00 F.L.A.
 Fan Motor Output 120 W
 Airflow (Lo - M1 - M2 - Hi) 780 - 880 - 990 - 1,090 Dry CFM
 740 - 850 - 950 - 1,060 Wet CFM
 Sound Level (Lo - M1 - M2 - Hi) 34 - 36 - 39 - 41 dB(A)
 SHF 0.71
 Moisture Removal 10.9 pt./h

DIMENSIONS	UNIT INCHES / MM	PANEL INCHES / MM
W	33-1/16 / 840	37-3/8 / 950
D	33-1/16 / 840	37-3/8 / 950
H	11-3/4 / 298	1-3/8 / 35

Weight (Unit/Grille)

lbs. 55 / 13
 kg 25 / 6
 External Finish Munsell No. 6.4Y 8.9 / 0.4
 Field Drainpipe Size O.D. 1-1/4" / 32 mm

Outdoor Unit

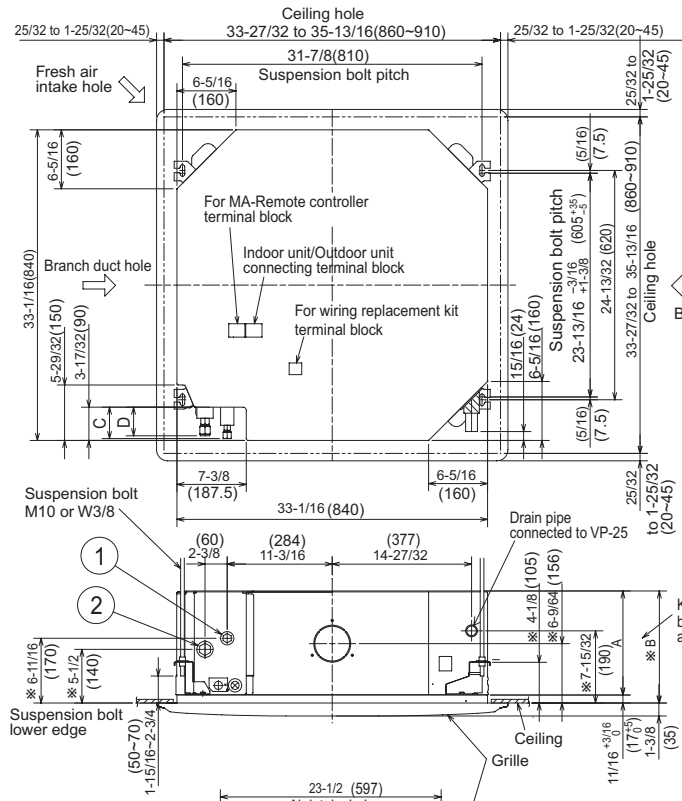
Compressor DC Inverter-driven Scroll
 MCA 26 A
 MOCP 40 A
 Fan Motor (ECM) 0.4 + 0.4 F.L.A.
 Sound Pressure Level
 Cooling 51 dB(A)
 Heating 55 dB(A)

DIMENSIONS	INCHES / MM
W	37-3/8 / 950
D	13 + 1-3/16 / 330 + 30
H	53-1/8 / 1,350

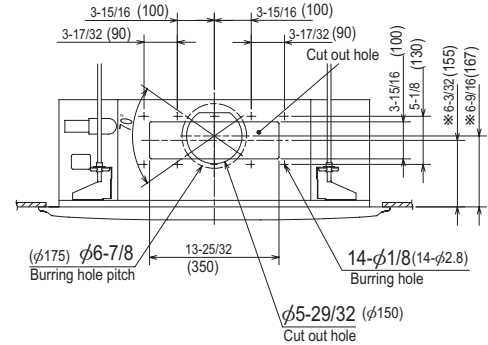
Weight 260 lbs. / 118 kg
 External Finish Munsell No. 3Y 7.8 / 1.1
 Refrigerant Type R410A
 Refrigerant Pipe Size O.D.
 Gas Side 5/8" / 15.88 mm
 Liquid Side 3/8" / 9.52 mm
 Max. Refrigerant Pipe Length 165' / 50 m
 Max. Refrigerant Pipe Height Difference 100' / 30 m
 Connection Method Flared

Notes:

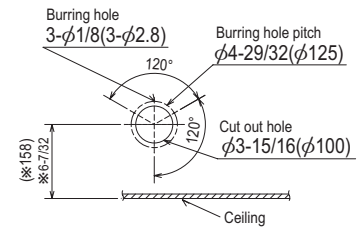
DIMENSIONS: PLA-A42BA4



Detail connecting of branch duct(Both aspects)

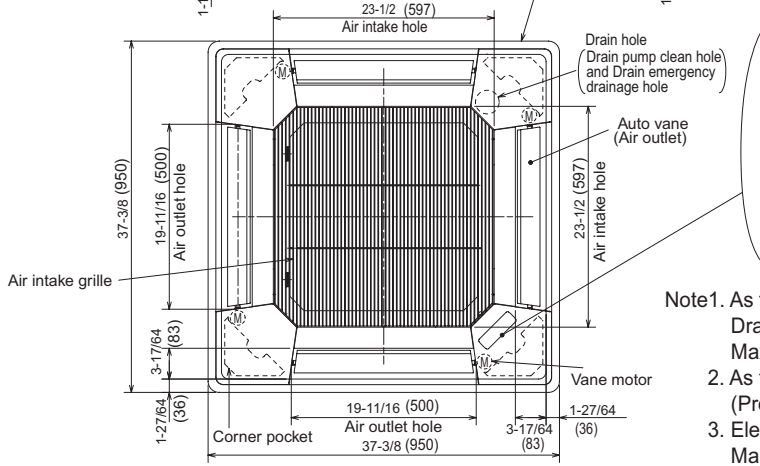


Detail drawing of fresh air intake hole



(Connected the attached flexible pipe or socket.)

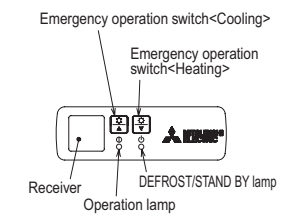
Keep 25/64(10) to 19/32(15) between unit ceiling and ceiling slab.



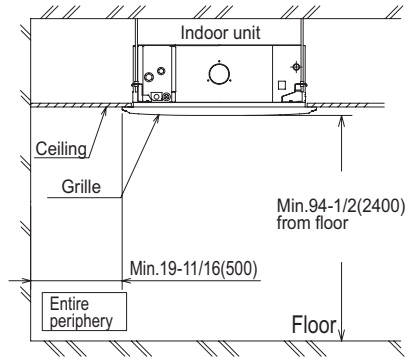
In case of standard grille



In case of wireless remote controller

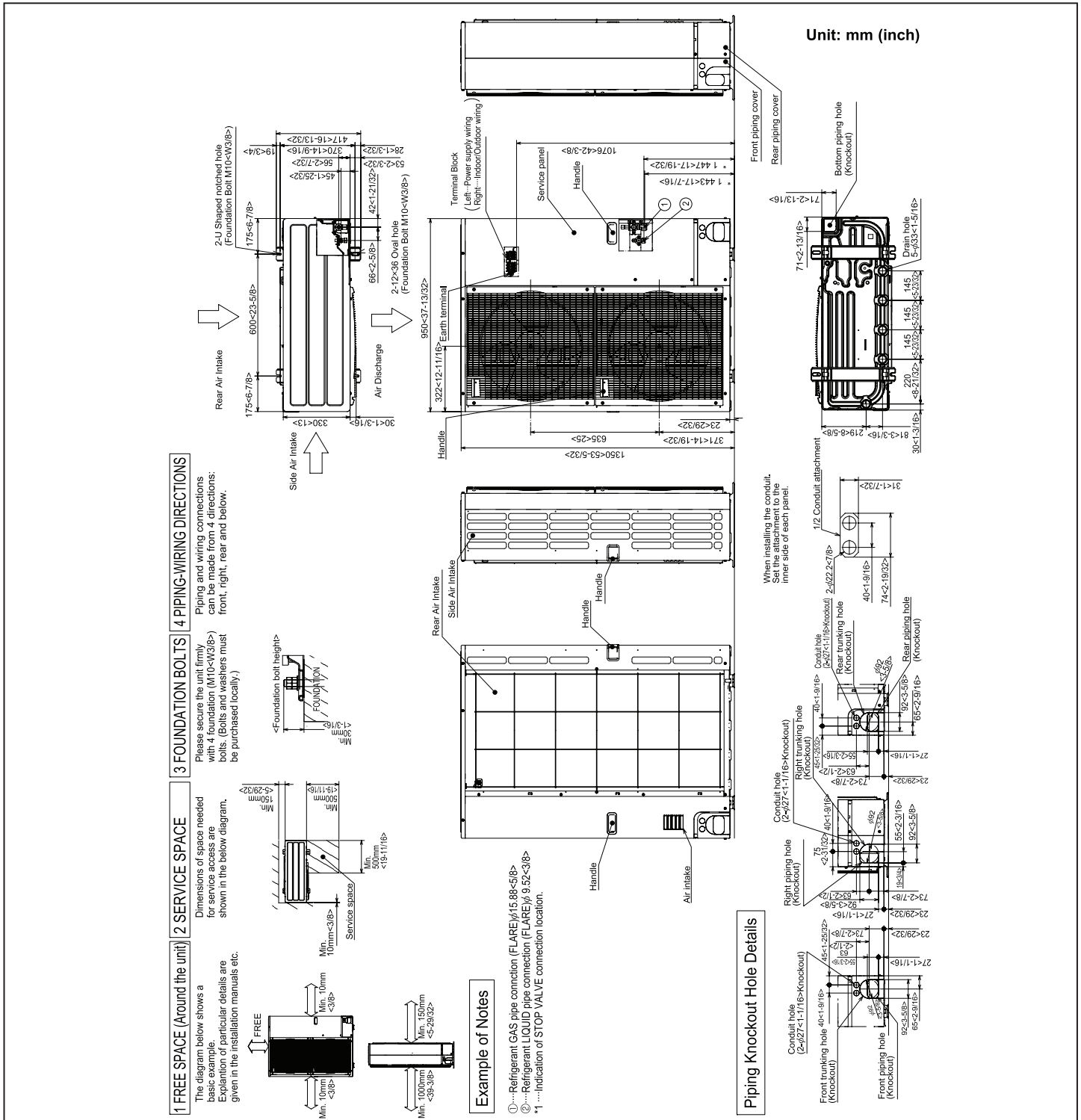


- Note1.** As for drain pipe, please use VP-25(O.D. 1-1/4(32mm) PVC TUBE). Drain pump is included.
 Max. lifting height is 33-7/16(850mm) from the ceiling.
2. As for suspension bolt, please use M10 or W3/8. (Procured at local site)
 3. Electrical box may be removed for the service purpose. Make sure to slack the electrical wire little bit for control/power wires connection.
 4. The height of the indoor unit can be adjusted with the grille attached.
 5. For the installation of the optional high efficiency filter or optional multi-functional casement.
 - 1) Add 5-5/16(135mm) to the dimensions * marked on the figure.
 - 2) Optional high efficiency filter must be used jointly with optional multi-functional casement.
 6. When installing the branch ducts, be sure to insulate adequately. Otherwise condensation and dripping may occur. (It becomes the cause of dew drops/water dew.)
 7. As for necessary installation/service space, please refer to the left figure.



Models	①	②	A	B	C	D
PLA-A12BA PLA-A18BA	Refrigerant pipe ...φ6.35mm Flared connection ...1/4	Refrigerant pipe ...φ12.7mm Flared connection ...1/2	9-1/2 (241)	10-3/16 (258)	3-5/32 (80)	2-29/32 (74)
PLA-A24BA PLA-A30BA	Refrigerant pipe ...φ9.52mm Flared connection ...3/8	Refrigerant pipe ...φ15.88mm Flared connection ...5/8	11-1/16 (281)	11-3/4 (298)	3-11/32 (85)	3-1/32 (77)

DIMENSIONS: PUZ-A42NHA5 (-BS)



Intertek



1340 Satellite Boulevard
 Suwanee, GA 30024
 Tele: 678-376-2900 • Fax: 800-889-9904
 Toll Free: 800-433-4822
 www.mehvac.com