

SPLIT-TYPE AIR CONDITIONERS

OUTDOOR UNIT

Revision G:

- MXZ-2B20NA- has been added.
- The part number of the outdoor fan motor for MXZ-3B24NA, MXZ-3B30NA and MXZ-4B36NA has been changed.
- The drawing number of the label for MXZ-5B42NA has been changed.

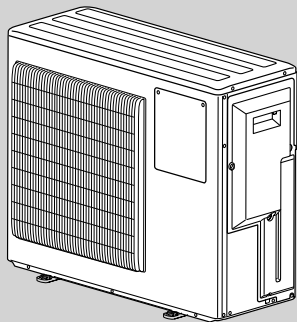
Please void OBB560 REVISED EDITION-F.

**No. OBB560
REVISED EDITION-G**

PARTS CATALOG

Models

MXZ-2B20NA	MXZ-2B20NA - <input type="checkbox"/>	1
	MXZ-2B20NA - <input type="checkbox"/>	2
MXZ-3B24NA	MXZ-3B24NA - <input type="checkbox"/>	1
MXZ-3B30NA	MXZ-3B30NA - <input type="checkbox"/>	1
MXZ-4B36NA	MXZ-4B36NA - <input type="checkbox"/>	1
MXZ-5B42NA		



MXZ-2B20NA

CONTENTS

1. RoHS PARTS LIST.....	2
2. OPTIONAL PARTS.....	14

SERVICE MANUAL (OBH560)

NOTE:
RoHS compliant products have <G> mark on the spec name plate.



Revision A:

- MXZ-2B20NA-□ has been added.

Revision B:

- MXZ-3B24NA and MXZ-4B36NA have been added.

Revision C:

- MXZ-3B30NA has been added.

Revision D:

- MXZ-3B24NA-□, MXZ-3B30NA-□, and MXZ-4B36NA-□ have been added.

Revision E:

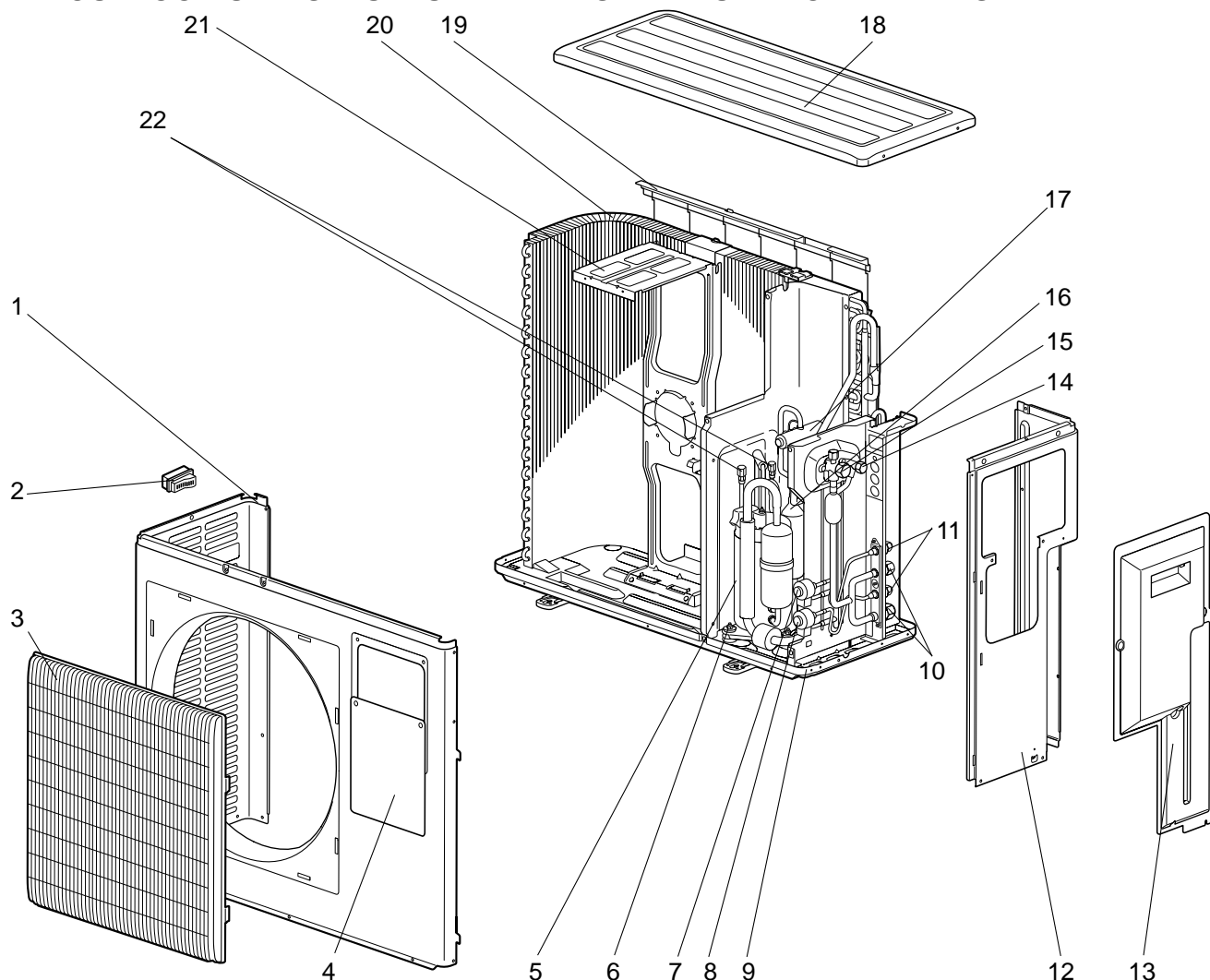
- MXZ-5B42NA has been added.

Revision F:

- Several parts numbers have been changed.

Revision G:

- MXZ-2B20NA-□ has been added.
- The part number of the outdoor fan motor for MXZ-3B24NA, MXZ-3B30NA and MXZ-4B36NA has been changed.
- The drawing number of the label for MXZ-5B42NA has been changed.

1**RoHS PARTS LIST (RoHS compliant)****MXZ-2B20NA****1-1. OUTDOOR UNIT STRUCTURAL PARTS AND FUNCTIONAL PARTS**

OBB560G

PARTS LIST (RoHS compliant)

MXZ-2B20NA

1-1. OUTDOOR UNIT STRUCTURAL PARTS AND FUNCTIONAL PARTS

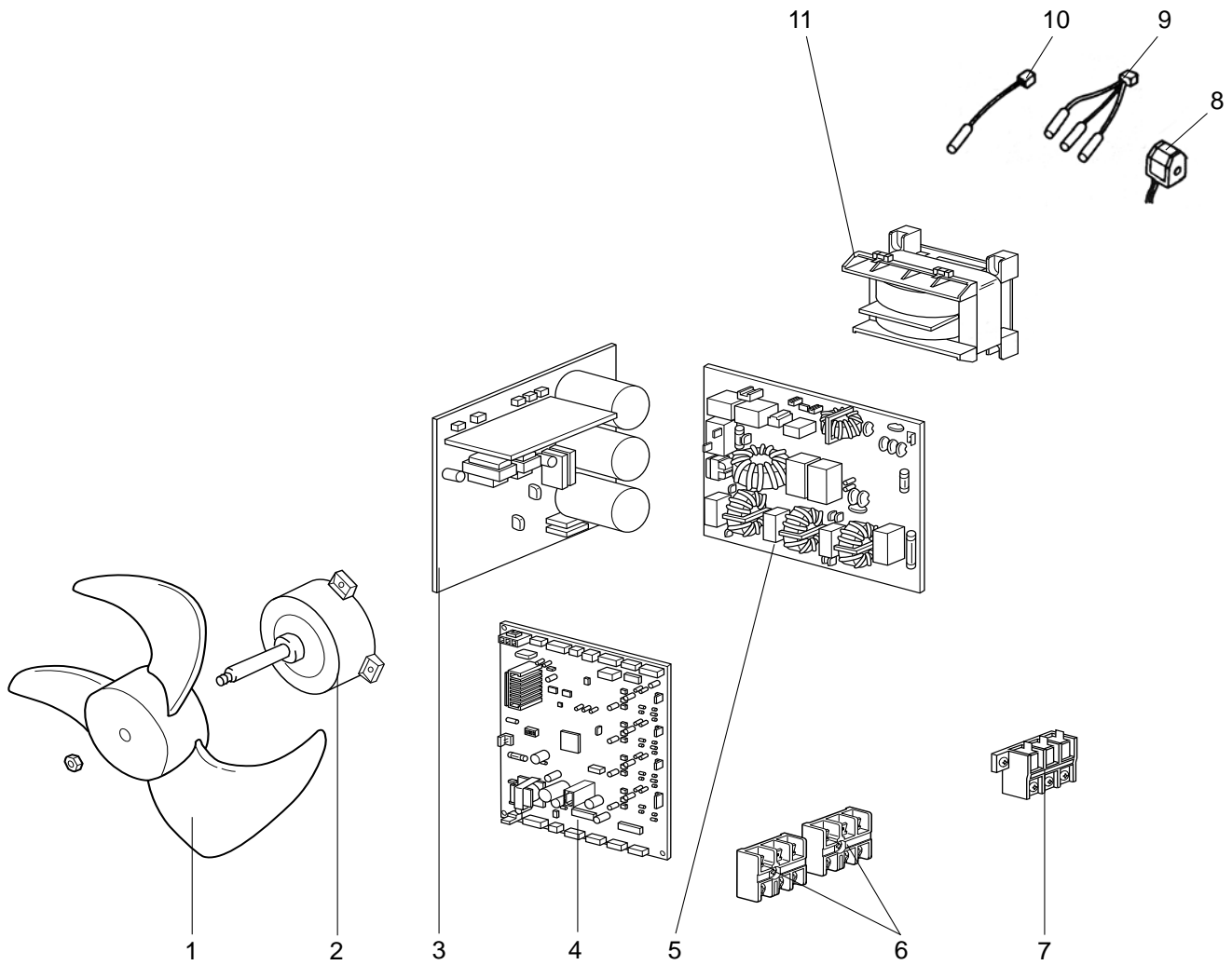
Part numbers that are circled are not shown in the illustration.

No.	RoHS	Parts No.	Parts Name	Symbol in Wiring Diagram	Q'ty/unit			Remakes
					MXZ-			
					2B20 NA	2B20 NA- <u>1</u>	2B20 NA- <u>2</u>	
1	G	E12 D36 232	CABINET		1	1	1	
2	G	E12 817 009	HANDLE		1	1	1	
3	G	E12 939 521	GRILLE		1	1	1	
4	G	E12 D36 246	SUB PANEL		1	1	1	
5	G	E12 C15 900	COMPRESSOR	MC	1	1	1	SNB130FQBH1
6	G	E12 C34 506	COMPRESSOR RUBBER SET		3	3	3	3 RUBBERS SET
7	G	E12 851 640	EXPANSION VALVE		1	1	1	B room
	G	E12 939 493	LEV COIL	LEV B	1			B room
	G	E12 F54 493	LEV COIL	LEV B		1	1	B room
8	G	E12 851 640	EXPANSION VALVE		1	1	1	A room
	G	E12 938 493	LEV COIL	LEV A	1			A room
	G	E12 F15 493	LEV COIL	LEV A		1	1	A room
9	G	E12 939 290	BASE		1	1	1	
10	G	E12 D36 666	UNION(GAS)		2	2	2	φ3/8
11	G	E12 D36 667	UNION(LIQUID)		2	2	2	φ1/4
12	G	E12 939 233	BACK PANEL		1	1	1	
13	G	E12 D36 245	SERVICE PANEL		1	1	1	
14	G	E12 D36 662	STOP VALVE (LIQUID) 3/8		1	1	1	φ3/8
15	G	E12 C88 661	STOP VALVE (GAS) 5/8		1	1	1	φ5/8
16	G	E12 C88 299	OIL SEPARATOR		1	1	1	
17	G	E12 A56 961	4-WAY VALVE		1	1	1	
18	G	E12 819 297	TOP PANEL		1	1	1	
19	G	E12 939 523	REAR GUARD		1	1	1	
20	G	E12 B05 630	OUTDOOR HEAT EXCHANGER		1	1	1	
21	G	E12 939 515	MOTOR SUPPORT		1	1	1	
22	G	E12 E79 641	SERVICE PORT		2	2	2	
②③	G	E12 938 937	CAPILLARY TUBE		8	8	8	O.D.0.14 x I.D.0.09 x 19.68
②④	G	E12 939 936	CAPILLARY TUBE		2	2	2	O.D.0.16 x I.D.0.11 x 3.93
②⑤	G	E12 938 936	CAPILLARY TUBE		1	1	1	O.D.0.10 x I.D.0.02 x 39.37
②⑥	G	E12 C18 959	POWER RECEIVER		1	1	1	
②⑦	G	E12 853 640	EXPANSION VALVE		1	1	1	E
	G	E12 819 493	LEV COIL	LEV E	1			E
	G	E12 F15 493	LEV COIL	LEV E		1	1	E

RoHS PARTS LIST (RoHS compliant)

MXZ-2B20NA

1-2. OUTDOOR UNIT FUNCTIONAL PARTS AND ELECTRICAL PARTS



PARTS LIST (RoHS compliant)

MXZ-2B20NA

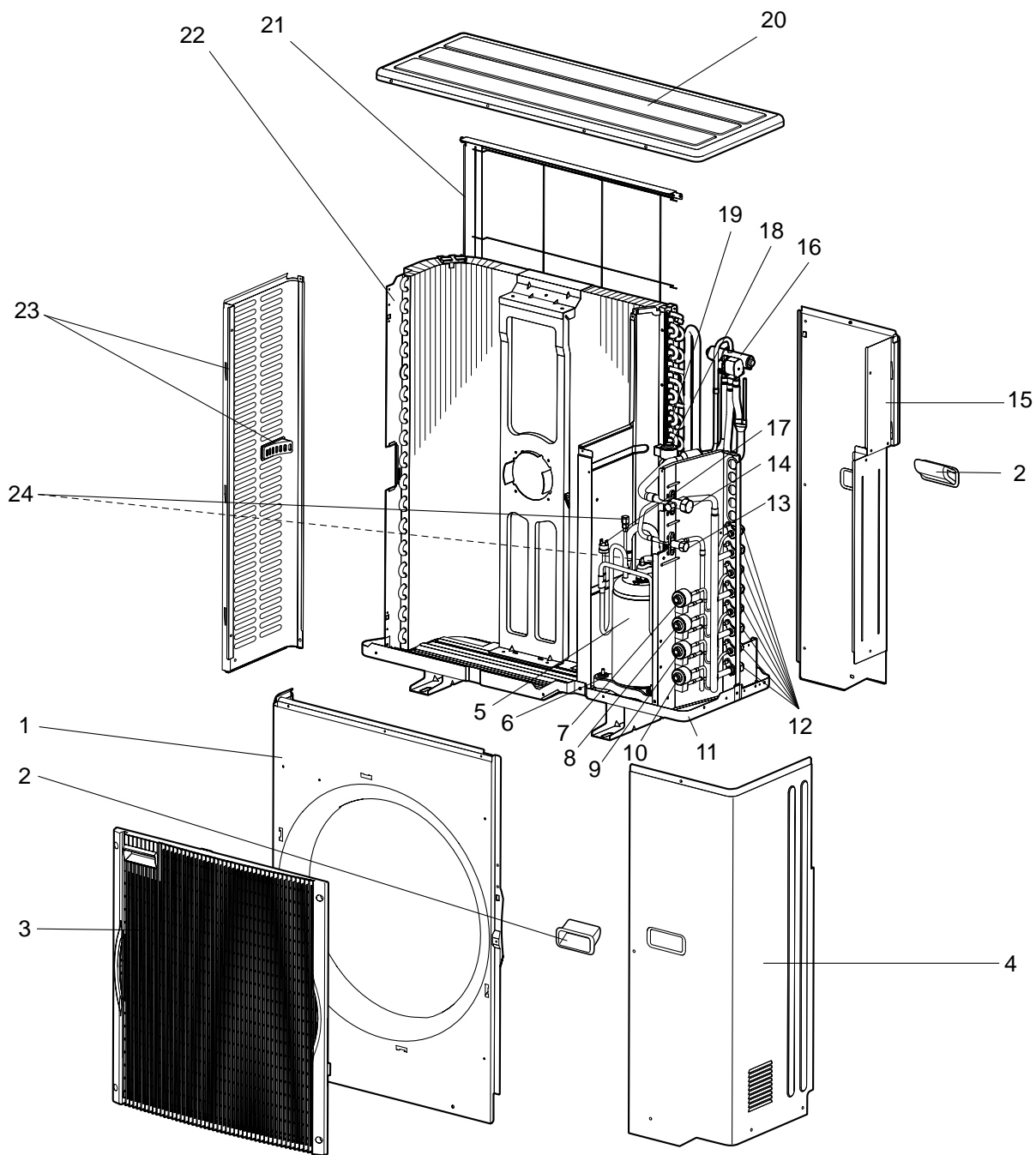
1-2. OUTDOOR UNIT FUNCTIONAL PARTS AND ELECTRICAL PARTS

No.	RoHS	Parts No.	Parts Name	Symbol in Wiring Diagram	Q'ty/unit			Remakes
					MXZ-			
					2B20 NA	2B20 NA- <u>1</u>	2B20 NA- <u>2</u>	
1	G	E12 851 501	PROPELLER FAN		1	1	1	
2	G	E12 A58 301	OUTDOOR FAN MOTOR	MF	1			RC0J60-□□
	G	E12 E34 301	OUTDOOR FAN MOTOR	MF		1	1	RC0J77-□□
3	G	E12 C15 440	POWER BOARD		1	1	1	Including heat sink and RT64
4	G	E12 F15 450	ELECTRONIC CONTROL P.C. BOARD		1			
	G	E12 F54 450	ELECTRONIC CONTROL P.C. BOARD			1		
	G	E12 R76 450	OUTDOOR CONTROL P.C. BOARD				1	
5	G	E12 D38 444	NOISE FILTER P.C. BOARD		1	1	1	
6	G	E12 C92 375	TERMINAL BLOCK	TB2~3	2	2	2	Indoor unit connecting
7	G	E12 A53 374	TERMINAL BLOCK	TB1	1	1	1	Power supply
8	G	E12 B05 490	R.V. COIL	21S4	1	1	1	
9	G	E12 938 308	THERMISTOR SET	RT61, RT62, RT68	1	1	1	DEFROST, DISCHARGE OUTDOOR HEAT EXCHANGER
10	G	E12 938 309	AMBIENT TEMPERATURE THERMISTOR	RT65	1	1	1	
11	G	E12 938 337	REACTOR	L	1	1	1	20 A 600 μH

RoHS PARTS LIST (RoHS compliant)

MXZ-3B24NA MXZ-3B30NA MXZ-4B36NA

1-3. OUTDOOR UNIT STRUCTURAL PARTS AND FUNCTIONAL PARTS



RoHS PARTS LIST (RoHS compliant)

MXZ-3B24NA MXZ-3B30NA MXZ-4B36NA

1-3. OUTDOOR UNIT STRUCTURAL PARTS AND FUNCTIONAL PARTS

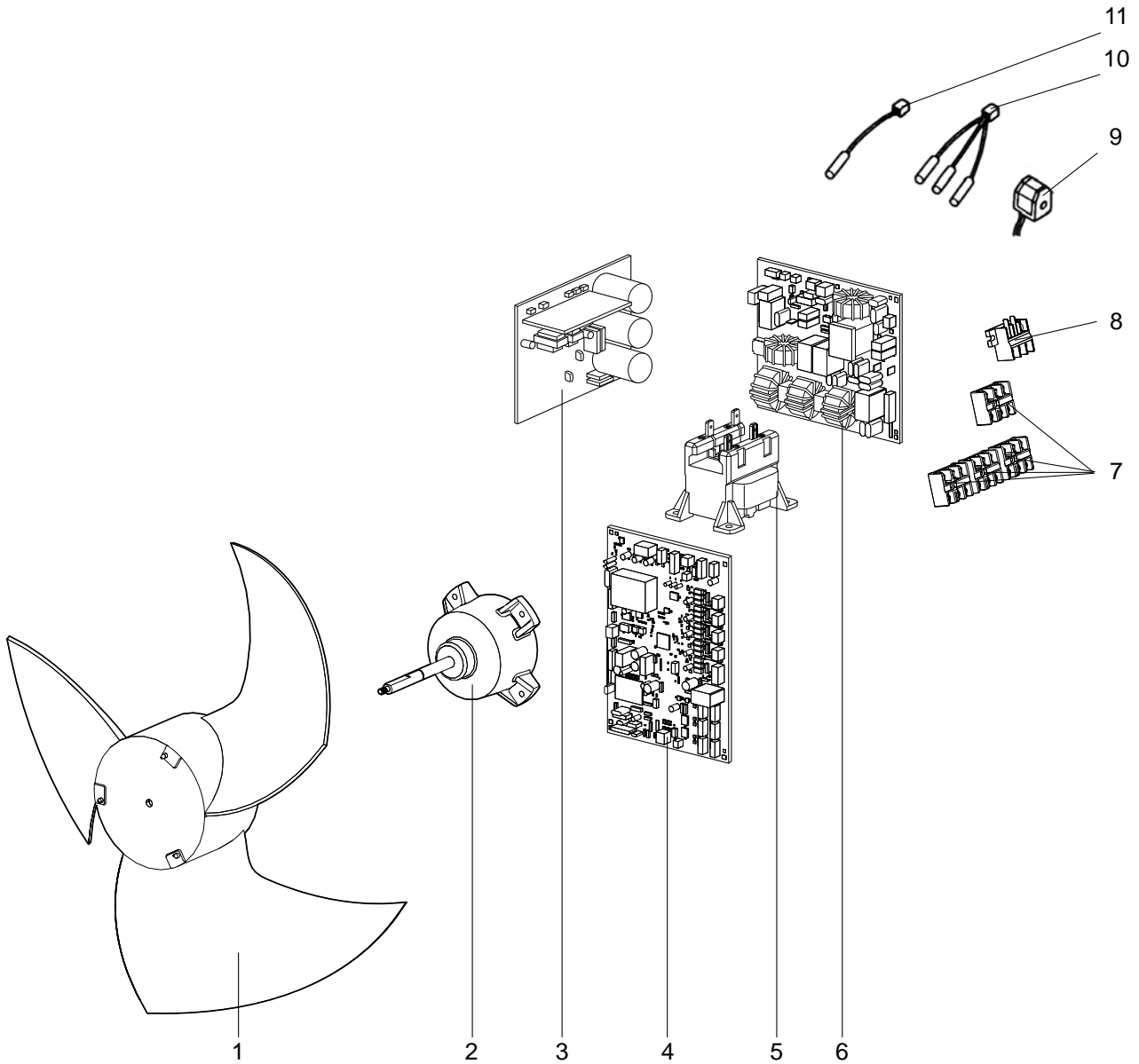
Part numbers that are circled are not shown in the illustration.

No.	RoHS	Parts No.	Parts Name	Symbol in Wiring Diagram	Q'ty/unit						Remakes
					MXZ-						
					3B24NA	3B24NA	3B30NA	3B30NA	4B36NA	4B36NA	
1	G	M21 0A2 232	FRONT PANEL		1	1	1	1	1	1	
2	G	M21 0A2 027	HANDLE ASSEMBLY		2	2	2	2	2	2	
3	G	M21 L2V 010	GRILLE		1	1	1	1	1	1	
4	G	M21 0A2 245	SERVICE PANEL		1	1	1	1	1	1	
5	G	T92 505 801	COMPRESSOR	MC	1	1	1	1	1	1	TNB220FMCH
6	G	M21 L2V 505	COMPRESSOR RUBBER SET		3	3	3	3	3	3	3 RUBBERS SET
7	G	M21 L2V 401	EXPANSION VALVE						1	1	D room
	G	M21 9T4 654	LEV COIL	LEV D					1	1	D room
8	G	M21 L2V 401	EXPANSION VALVE		1	1	1	1	1	1	C room
	G	M21 9T4 653	LEV COIL	LEV C	1	1	1	1	1	1	C room
9	G	M21 L2V 401	EXPANSION VALVE		1	1	1	1	1	1	B room
	G	M21 9T4 652	LEV COIL	LEV B	1	1	1	1	1	1	B room
10	G	M21 L2V 401	EXPANSION VALVE		1	1	1	1	1	1	A room
	G	M21 9T4 651	LEV COIL	LEV A	1	1	1	1	1	1	A room
11	G	M21 0A2 290	BASE ASSEMBLY		1	1	1	1	1	1	
12	G	M21 0A2 644	UNION		1	1	1	1	1	1	$\phi 1/2, \phi 3/8, \phi 1/4$ SET
13	G	M21 0A2 668	STOP VALVE (LIQUID) 3/8		1	1	1	1	1	1	$\phi 3/8$
14	G	M21 0A6 667	STOP VALVE (GAS) 5/8		1	1	1	1	1	1	$\phi 5/8$
15	G	M21 0A2 248	REAR PANEL		1	1	1	1	1	1	
16	G	T2W L7V 642	4-WAY VALVE		1	1	1	1	1	1	
17	G	M21 L2V 646	HIGH PRESSURE SWITCH	HPS	1	1	1	1	1	1	4.8 MPa (48.9 kg/cm ²)
18	G	M21 L2V 402	EXPANSION VALVE		1	1	1	1			F
	G	M21 0A2 402	EXPANSION VALVE						1	1	F
19	G	M21 9T6 651	LEV COIL	LEV F	1	1	1	1	1	1	
20	G	M21 L2V 297	TOP PANEL		1	1	1	1	1	1	
21	G	M21 0A2 523	REAR GUARD		1	1	1	1	1	1	
22	G	M21 EBE 630	HEAT EXCHANGER		1	1	1	1	1	1	
23	G	M21 L2V 249	SIDE PANEL		1	1	1	1	1	1	Including a handle
24	G	T2W L7V 641	SERVICE PORT		2	2	2	2	2	2	
25	G	M21 EA0 959	POWER RECEIVER		1	1	1	1	1	1	
26	G	M21 0A2 937	CAPILLARY TUBE		2	2	2	2	2	2	O.D.0.12 x I.D.0.08 x 11.8
27	G	M21 0A2 936	CAPILLARY TUBE		3	3	3	3	4	4	O.D.0.16 x I.D.0.11 x 3.94
28	G	M21 L2V 938	CAPILLARY TUBE		1	1	1	1	1	1	O.D.0.10 x I.D.0.02 x 39.37
29	G	T2W L7V 656	OIL SEPARATOR		1	1	1	1	1	1	

RoHS PARTS LIST (RoHS compliant)

MXZ-3B24NA MXZ-3B30NA MXZ-4B36NA

1-4. OUTDOOR UNIT FUNCTIONAL PARTS AND ELECTRICAL PARTS



RoHS PARTS LIST (RoHS compliant)

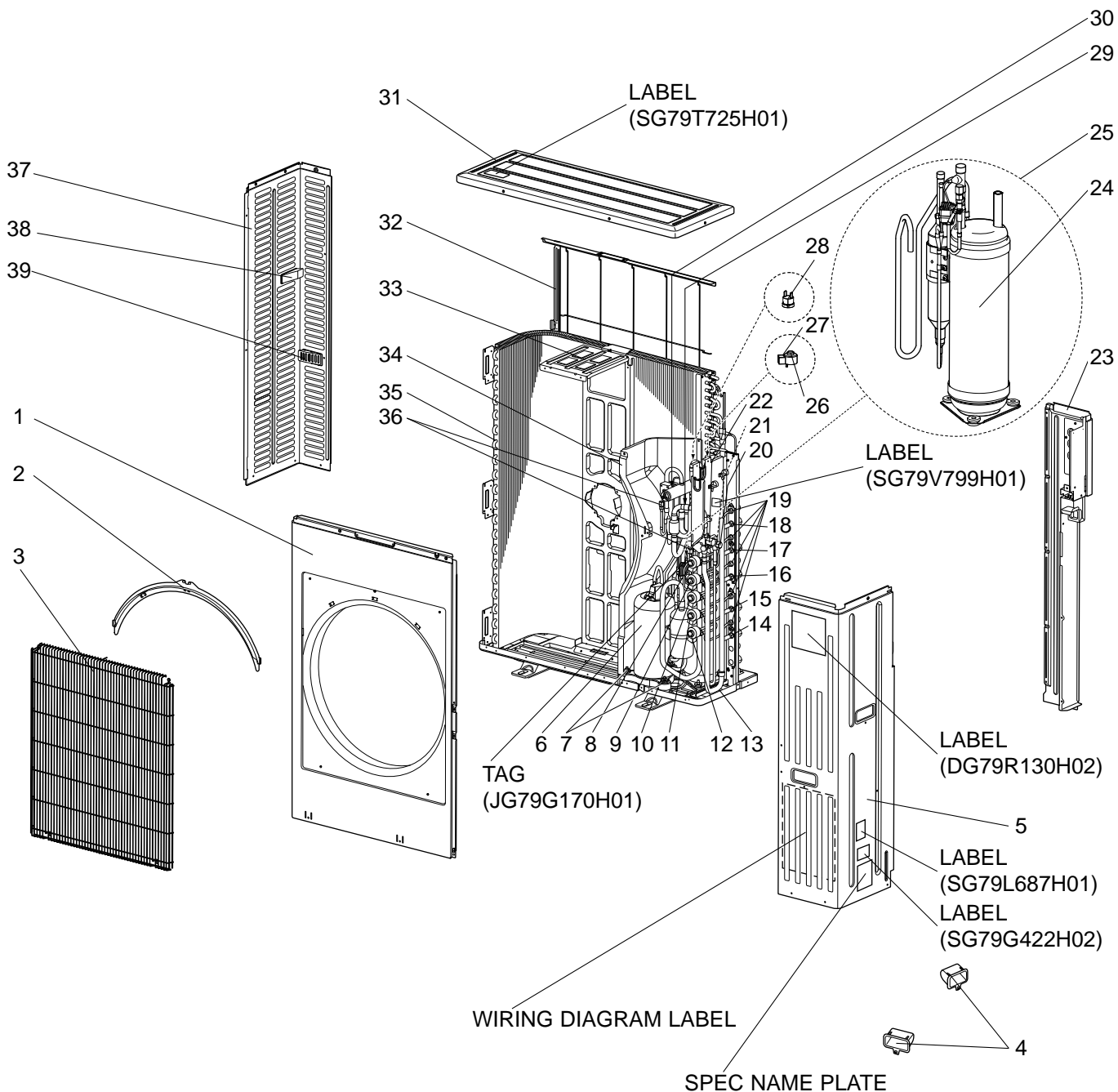
MXZ-3B24NA MXZ-3B30NA MXZ-4B36NA

1-4. OUTDOOR UNIT FUNCTIONAL PARTS AND ELECTRICAL PARTS

No.	RoHS	Parts No.	Parts Name	Symbol in Wiring Diagram	Q'ty/unit						Remakes
					MXZ-						
					3B24NA	3B24NA	3B30NA	3B30NA	4B36NA	4B36NA	
1	G	M21 L2V 501	PROPELLER FAN		1	1	1	1	1	1	
2	G	T2W EAM 301	OUTDOOR FAN MOTOR	MF	1		1		1		RC0J77-□□
	G	T2W 4K1 301	OUTDOOR FAN MOTOR	MF		1		1		1	RC0J77-□□
3	G	M21 9T4 440	POWER BOARD		1	1	1	1	1	1	Including heat sink and RT64
4	G	T2W EN3 451	ELECTRONIC CONTROL P.C. BOARD		1						
	G	T2W 4K3 451	ELECTRONIC CONTROL P.C. BOARD			1					
	G	T2W EN2 451	ELECTRONIC CONTROL P.C. BOARD				1				
	G	T2W 4K2 451	ELECTRONIC CONTROL P.C. BOARD					1			
	G	T2W EL8 451	ELECTRONIC CONTROL P.C. BOARD						1	1	
5	G	M21 9T7 337	REACTOR	L	1	1	1	1	1	1	20 A 500 μH
6	G	M21 0A0 424	NOISE FILTER P.C. BOARD		1	1	1	1	1	1	
7	G	T2W 0A2 376	TERMINAL BLOCK	TB2~5	3	3	3	3	4	4	Indoor unit connecting
8	G	T2W L7V 377	TERMINAL BLOCK	TB1	1		1		1		Power supply
	G	T2W 4K1 375	TERMINAL BLOCK	TB1		1		1		1	Power supply
9	G	T2W L7V 398	R.V. COIL	21S4	1	1	1	1	1	1	
10	G	M21 L2V 308	THERMISTOR SET	RT61,62,68	1	1	1	1	1	1	DEFROST, DISCHARGE, OUTDOOR HEAT EXCHANGER
11	G	M21 0A2 309	AMBIENT TEMPERATURE THERMISTOR	RT65	1	1	1	1	1	1	

MXZ-5B42NA

1-5. OUTDOOR UNIT FUNCTIONAL PARTS AND ELECTRICAL PARTS



MXZ-5B42NA

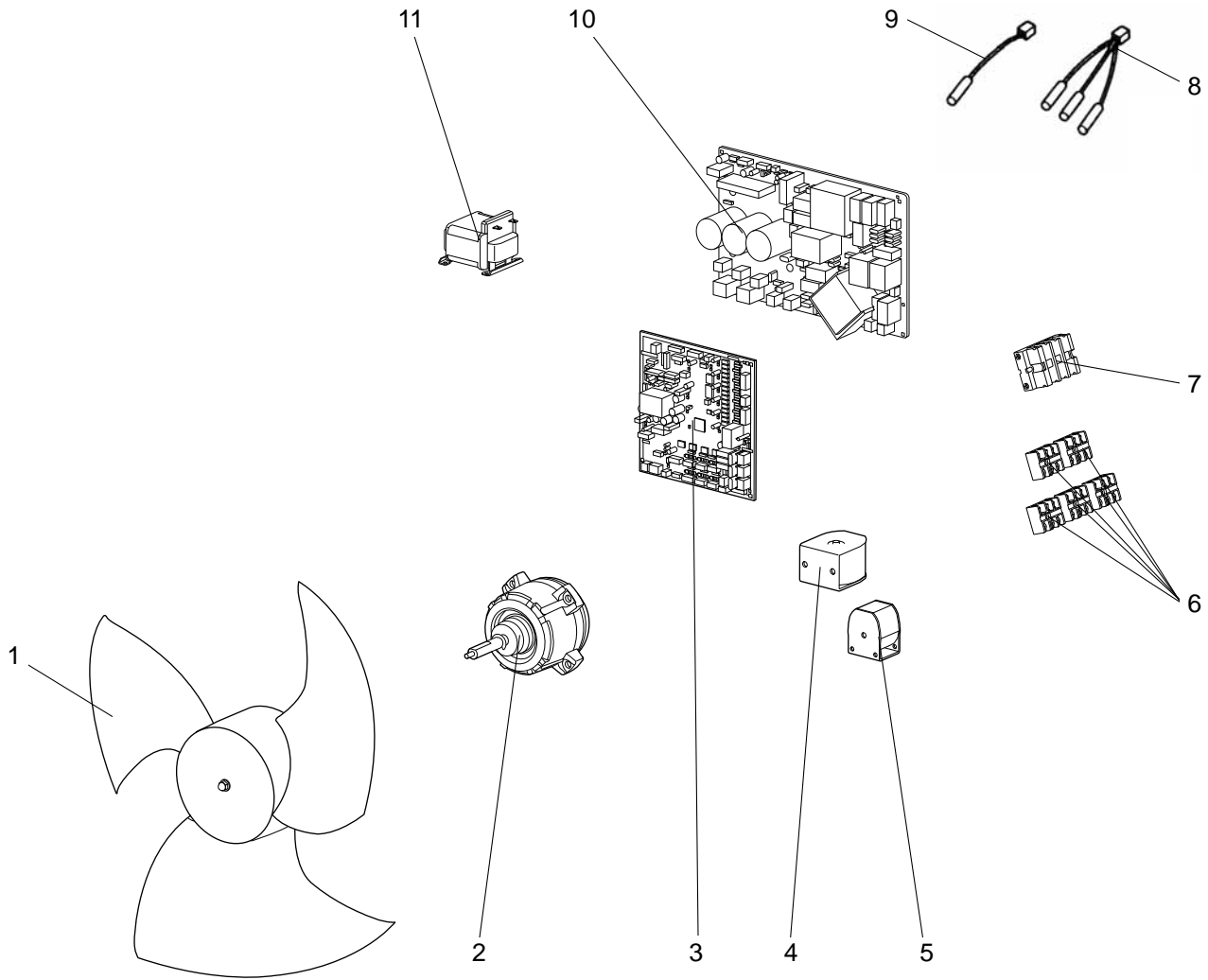
1-5. OUTDOOR UNIT FUNCTIONAL PARTS AND ELECTRICAL PARTS

Part numbers that are circled are not shown in the illustration.

No.	RoHS	Parts No.	Parts Name	Symbol In Wiring Diagram	Q'ty/unit		Remarks
					MXZ-	5B42NA	
1	G	M21 EAC 232	FRONT PANEL			1	
2	G	M21 2Y7 750	GRILLE ROOF			1	
3	G	M21 EA6 521	GRILLE			1	
4	G	M21 1Y7 027	HANDLE ASSEMBLY			2	
5	G	M21 EA5 245	SERVICE PANEL			1	Without LABEL
6	G	T92 EA0 617	COMPRESSOR	MC		1	TNB306FPGM2
7	G	M21 L2V 505	COMPRESSOR RUBBER SET			3	3RUBBERS SET
8	G	M21 L2V 401	EXPANSION VALVE			1	E room
	G	M21 1W5 651	LEV COIL	LEV E		1	E room
9	G	M21 L2V 401	EXPANSION VALVE			1	D room
	G	M21 1W4 651	LEV COIL	LEV D		1	D room
10	G	M21 L2V 401	EXPANSION VALVE			1	C room
	G	M21 1W3 651	LEV COIL	LEV C		1	C room
11	G	M21 L2V 401	EXPANSION VALVE			1	B room
	G	M21 1W2 651	LEV COIL	LEV B		1	B room
12	G	M21 L2V 401	EXPANSION VALVE			1	A room
	G	M21 1W1 651	LEV COIL	LEV A		1	A room
13	G	M21 EA4 290	BASE ASSEMBLY			1	
14	G	M21 EA7 644	UNION (LIQUID)			1	Ø1/4, E room
15	G	M21 EA6 644	UNION (LIQUID)			1	Ø1/4, D room
16	G	M21 EA5 644	UNION (LIQUID)			1	Ø1/4, C room
17	G	M21 EA4 644	UNION (LIQUID)			1	Ø1/4, B room
18	G	M21 EA3 644	UNION (LIQUID)			1	Ø1/4, A room
19	G	M21 EA1 644	UNION (GAS)			1	Ø3/8 (5 PCS), Ø1/2 (1 PC) SET
20	G	M21 2Y7 667	STOP VALVE (LIQUID) 3/8			1	Ø3/8
21	G	M21 EA2 642	STRAINER PIPE			1	
22	G	M21 EA0 668	BALL VALVE (GAS) 5/8			1	Ø5/8
23	G	T2W EA6 531	BACK PANEL			1	
24	G	M21 EA0 934	ACCUMULATOR ASSEMBLY			1	
25	G	M21 EA2 933	ACCUMULATOR AND PIPE ASSEMBLY			1	
26	G	M21 2Y7 402	EXPANSION VALVE			1	M
27	G	M21 EAA 651	LEV COIL SET	LEV M		1	Including heat insulation
28	G	M21 L2V 646	HIGH PRESSURE SWITCH	HPS		1	4.8 MPa (48.9 kg/cm ²)
29	G	T2W EAS 645	4-WAY VALVE ASSEMBLY			1	
30	G	M21 2Y7 642	4-WAY VALVE			1	
31	G	M21 EA4 297	TOP PANEL			1	Without LABEL
32	G	M21 EA2 523	REAR GUARD			1	
33	G	M21 EA2 515	MOTOR SUPPORT			1	
34	G	M21 EA3 293	SEPARATOR			1	
35	G	M21 EAT 630	OUTDOOR HEAT EXCHANGER			1	
36	G	M21 EA2 641	CHARGE PLUG			2	Without TAG
37	G	M21 EA2 249	SIDE PANEL			1	
38	G	M21 2Y5 027	HANDLE			1	
39	G	M21 2Y7 027	HANDLE			1	
④⑩	G	M21 EA1 641	2-WAY SOLENOID VALVE			1	
④①	G	M21 0A2 936	CAPILLARY TUBE			5	O.D. 0.16 x I.D. x 0.11 x 3.94
④②	G	M21 L2V 938	CAPILLARY TUBE			1	O.D. 0.10 x I.D. x 0.02 x 39.37
④③	G	M21 EA2 633	OUT PIPE ASSEMBLY			1	O.D. 0.14 x I.D. x 0.09 x 23.6 (x 1) O.D. 0.14 x I.D. x 0.09 x 19.7 (x 3) O.D. 0.14 x I.D. x 0.09 x 11.8 (x 2)
④④	G	M21 EA8 800	TOP FELT			1	
④⑤	G	M21 EA8 801	COMPRESSOR FELT			1	

MXZ-5B42NA

1-6. OUTDOOR UNIT FUNCTIONAL PARTS AND ELECTRICAL PARTS



MXZ-5B42NA

1-6. OUTDOOR UNIT FUNCTIONAL PARTS AND ELECTRICAL PARTS

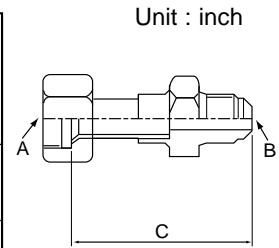
No.	RoHS	Parts No.	Parts Name	Symbol In Wiring Diagram	Q'ty/unit		Remarks
					MXZ-		
					5B42NA		
1	G	M21 EA1 501	PROPELLER FAN			1	
2	G	M21 EAD 301	OUTDOOR FAN MOTOR	MF		1	SIC-81FW-D888-□
3	G	T2W EH2 451	OUTDOOR CONTROL P.C. BOARD			1	
4	G	T2W EA0 399	2-WAY VALVE SOLENOID COIL	21S2		1	
5	G	T2W EA0 398	R.V. COIL	21S4		1	
6	G	T2W 0A2 376	TERMINAL BLOCK	TB2~6		5	Indoor unit connecting
7	G	T2W EA9 375	TERMINAL BLOCK	TB1		1	Power supply
8	G	M21 2Y7 308	THERMISTOR SET	RT61,62,68		1	DEFROST, DISCHARGE, OUTDOOR HEAT EXCHANGER
9	G	M21 2Y7 309	AMBIENT TEMPERATURE THERMISTOR	RT65		1	
10	G	T2W EA2 440	OUTDOOR POWER P.C. BOARD			1	
11	G	M21 EA3 337	REACTOR	L		1	30A 750μH

2

OPTIONAL PARTS

2-1. DIFFERENT-DIAMETER PIPE

MXZ-2B20NA MXZ-3B24NA MXZ-3B30NA MXZ-4B36NA MXZ-5B42NA	Model name	Connected pipes diameter	Diameter A	Diameter B	Length C
For different-diameter pipes	MAC-A454JP	φ3/8 — φ 1/2	φ 3/8	φ 1/2	2.72
	MAC-A455JP	φ1/2 — φ 3/8	φ 1/2	φ 3/8	2.56
	MAC-A456JP	φ1/2 — φ 5/8	φ 1/2	φ 5/8	2.62
	PAC-493PI	φ1/4 — φ 3/8	φ 1/4	φ 3/8	2.38
	PAC-SG76RJ-E	φ3/8 — φ 5/8	φ 3/8	φ 5/8	4

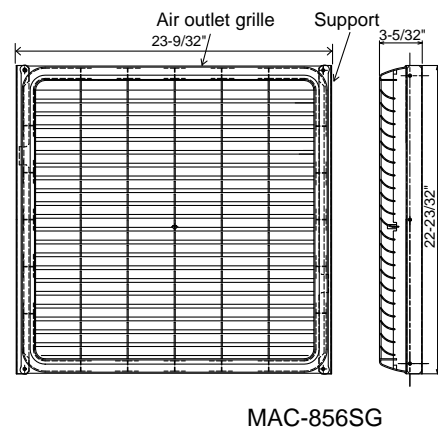
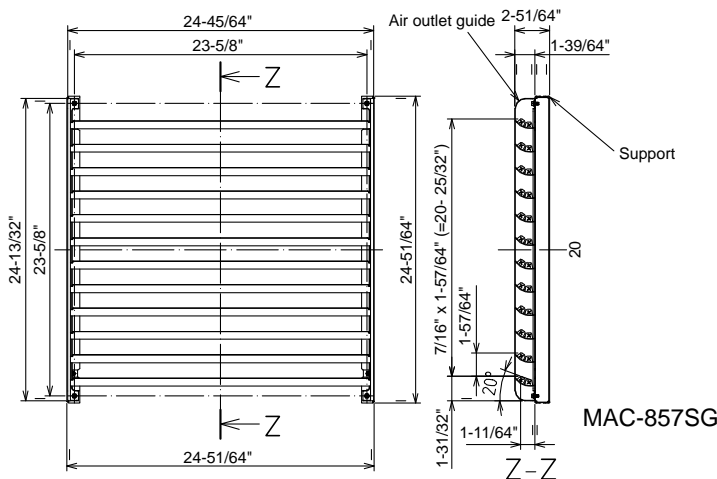
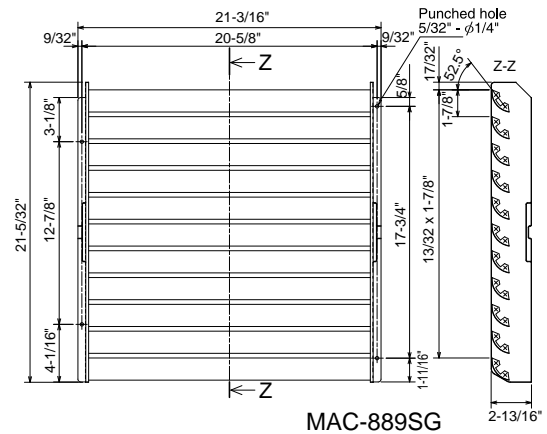


2-2. OUTLET GUIDE

Changes air discharge direction.

Applied unit	Model name	Model code
MXZ-2B20NA	MAC-889SG	506-889
MXZ-3B24NA MXZ-3B30NA MXZ-4B36NA	MAC-856SG	51H-856
MXZ-5B42NA	MAC-857SG	551H-857

Unit : inch



mitsubishi electric corporation

HEAD OFFICE: TOKYO BLDG., 2-7-3, MARUNOUCHI, CHIYODA-KU, TOKYO 100-8310, JAPAN

© Copyright 2009 MITSUBISHI ELECTRIC CORPORATION

Distributed in Mar. 2015. No. OBB560 REVISED EDITION-G

Distributed in Dec. 2013. No. OBB560 REVISED EDITION-F

Distributed in Jun. 2013. No. OBB560 REVISED EDITION-E

Distributed in Jan. 2011. No. OBB560 REVISED EDITION-D

Distributed in Mar. 2010. No. OBB560 REVISED EDITION-C 6

Distributed in Feb. 2010. No. OBB560 REVISED EDITION-B 6

Distributed in Dec. 2009. No. OBB560 REVISED EDITION-A 5

Distributed in Sep. 2009. No. OBB560 5

Made in Japan

New publication, effective Mar. 2015

Specifications are subject to change without notice.