

**SUBMITTAL DATA: MSZ-GE18NA-8 & MUZ-GE18NA-1**

18,000 BTU/H WALL-MOUNTED HEAT-PUMP SYSTEMS

Job Name:	Location:	Date:
Purchaser:	Engineer:	
Submitted to:	For <input type="checkbox"/> Reference <input type="checkbox"/> Approval <input type="checkbox"/> Construction	
System Designation:	Schedule No.:	



Indoor Unit: MSZ-GE18NA-8


 Wireless Remote  
Controller


Outdoor Unit: MUZ-GE18NA-1

**GENERAL FEATURES**

- Wall-mounted indoor unit
- Standard Hybrid Catechin Prefilter is included with indoor unit
- Quiet operation
- Auto fan speed control: Quiet, Low, Medium, High, and Super High;
- Hand-held Wireless Remote Controller
- Indoor unit powered from outdoor unit using A-Control
- Auto restart following a power outage
- Base heater is available as an option
- Anti-allergy Enzyme Filter
- Limited warranty: five years parts and seven years compressor

**ACCESSORIES**
**Outdoor Unit**

- Base Heater (MAC-641BH-U)
- Drain Socket Assembly (MAC-811DS)

**Indoor Unit**

- Condensate Pump (230V; SI3100-230)

**Controller Options**

- Wireless Wall-mounted Remote Controller Kit (MHK1)\*
- Portable Controller (MCCH1)\*
- Outdoor Air Sensor (MOS1)\*

\*See Submittal for information on each option.

- Wired Wall-mounted Controller  
(PAR-21MAAU requires MAC-333IF)
- System Control Interface (MAC-333IF)
- Remote Temperature Sensor (M21-JKO-307)
- Lockdown Bracket for Hand-held Controller (RCMKP1CB)



# SPECIFICATIONS: MSZ-GE18NA-8 & MUZ-GE18NA-1

### Cooling\*

Rated Capacity . . . . . 17,200 Btu/h  
 Minimum Capacity . . . . . 3,700 Btu/h  
 SEER . . . . . 19.2 Btu/h/W  
 Total Input . . . . . 1,640 W

### Heating at 47°F\*

Rated Capacity . . . . . 21,600 Btu/h  
 Minimum Capacity . . . . . 3,500 Btu/h  
 HSPF . . . . . 10.0 Btu/h/W  
 Total Input . . . . . 1,900 W

### Heating at 17°F\*

Rated Capacity . . . . . 13,400 Btu/h  
 Rated Total Input . . . . . 1,450 W  
 Maximum Capacity\*\* . . . . . 17,200 Btu/h  
 Maximum Total Input . . . . . 2,080 W

### \* Rating Conditions per AHRI Standard

Cooling | Indoor: 80° F (27° C) DB / 67° F (19° C) WB  
 Cooling | Outdoor: 95° F (35° C) DB / 75° F (24° C) WB  
 Heating at 47°F | Indoor: 70° F (21° C) DB / 60° F (16° C) WB  
 Heating at 47°F | Outdoor: 47° F (8° C) DB / 43° F (6° C) WB  
 Heating at 17° F | Indoor: 70° F (21° C) DB / 60° F (16° C) WB  
 Heating at 17° F | Outdoor: 17° F (-8° C) DB / 15° F (-9° C) WB

### \*\* Maximum Capacity is at full speed and performance for INVERTER-driven System.

### Electrical Requirements

Power Supply . . . . . 208 / 230V, 1-Phase, 60 Hz  
 Breaker Size . . . . . 15 A

### Voltage

Indoor - Outdoor S1-S2 . . . . . AC 208 / 230V  
 Indoor - Outdoor S2-S3 . . . . . DC ±24V  
 Indoor - Remote Controller . . . . . MHK1 DC 3V  
   PAR-21MAAU DC 12V  
   PAR-FL32MA DC 3V

### OPERATING RANGE

		Indoor Intake Air Temp.	Outdoor Intake Air Temp.
Cooling	Maximum	90° F (32° C) DB 73° F (23° C) WB	115° F (46° C) DB
	Minimum	67° F (19° C) DB 57° F (14° C) WB	14° F (-10° C) DB
Heating	Maximum	80° F (27° C) DB 67° F (19° C) WB	75° F (24° C) DB 65° F (18° C) WB
	Minimum	70° F (21° C) DB 60° F (16° C) WB	-4° F (-20° C) DB -5° F (-21° C) WB

### Indoor Unit

MCA . . . . . 1 A  
 Blower Motor (ECM) . . . . . 0.76 F.L.A.  
 Airflow (Quiet - Lo - Med - Hi - Super Hi)  
     Cooling . . . . . 230 - 275 - 339 - 420 - 533 Dry CFM  
                             194 - 240 - 304 - 385 - 498 Wet CFM  
     Heating . . . . . 230 - 275 - 339 - 431 - 512 Dry CFM

### Sound Pressure Level (Quiet - Lo - Med - Hi - Super Hi)

Cooling . . . . . 28 - 33 - 38 - 44 - 49 dB(A)  
 Heating . . . . . 28 - 33 - 38 - 43 - 49 dB(A)

DIMENSIONS	UNIT INCHES / MM
W	31-7/16 / 799
D	9-1/8 / 232
H	11-5/8 / 295

Weight . . . . . 22 lbs. / 10 kg  
 External Finish . . . . . Munsell No. 1.0Y 9.2 / 0.2  
 Field Drainpipe Size O.D. . . . . 5/8" / 15.88 mm

### Outdoor Unit

Compressor . . . . . DC Inverter-driven Twin Rotary  
 MCA . . . . . 14 A  
 Fan Motor (ECM) . . . . . 0.93 F.L.A.  
 Sound Pressure Level  
     Cooling . . . . . 54 dB(A)  
     Heating . . . . . 56 dB(A)

DIMENSIONS	INCHES / MM
W	33-1/16 / 840
D	13 / 330
H	33-7/16 / 849

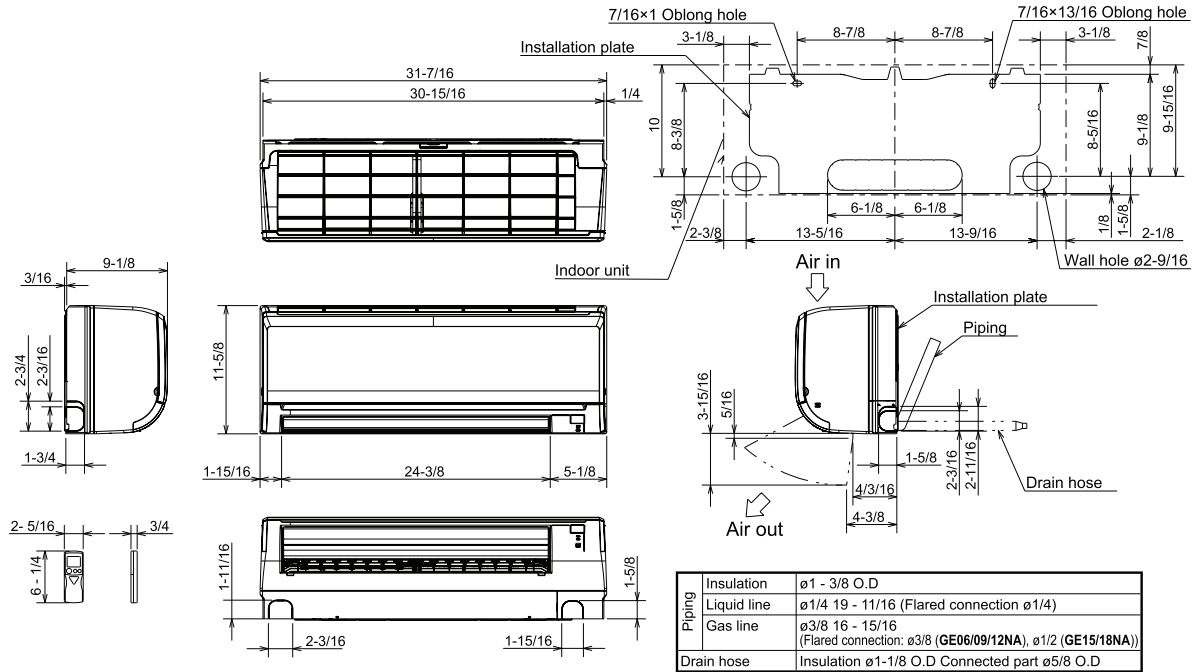
Weight . . . . . 119 lbs. / 54 kg  
 External Finish . . . . . Munsell No. 3Y 7.8 / 1.1  
 Refrigerant Type . . . . . R410A  
 Refrigerant Pipe Size O.D.  
     Gas Side . . . . . 1/2" / 12.7 mm  
     Liquid Side . . . . . 1/4" / 6.35 mm  
 Max. Refrigerant Pipe Length . . . . . 100 ft. / 30 m  
 Max. Refrigerant Pipe Height Difference . . . . . 50 ft. / 15 m  
 Connection Method . . . . . Flared

Notes:

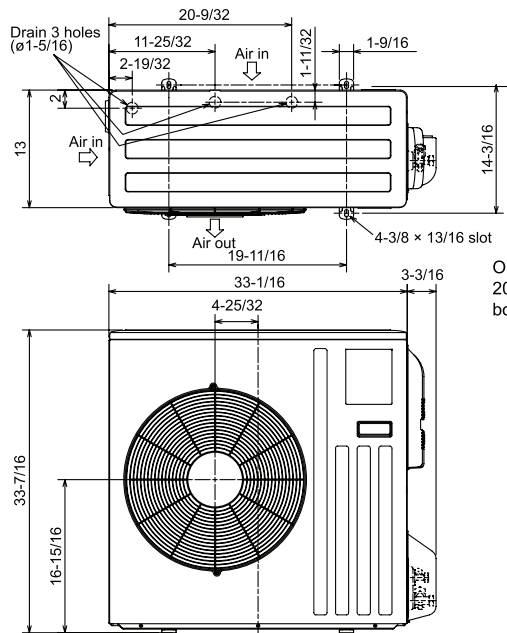
# DIMENSIONS: MSZ-GE18NA-8 & MUZ-GE18NA-1

## MSZ-GE18NA-8

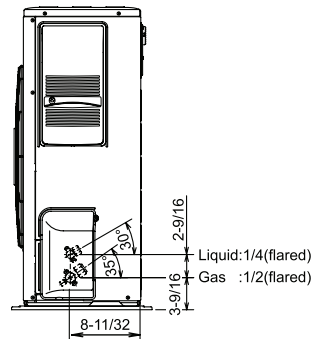
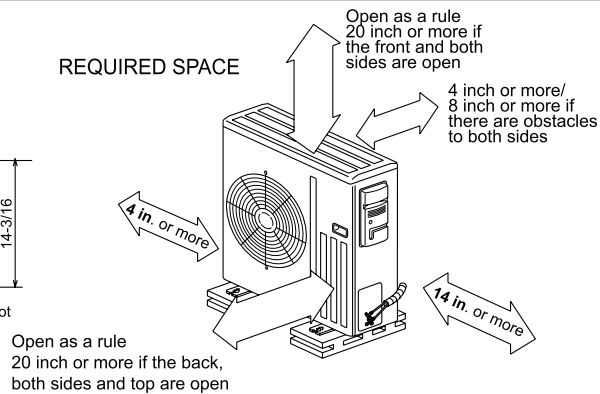
Unit: inch



## MUZ-GE18NA-1



### REQUIRED SPACE



**Intertek**



1340 Satellite Boulevard  
Suwanee, GA 30024  
Tele: 678-376-2900 • Fax: 800-889-9904  
Toll Free: 800-433-4822  
www.mehvac.com