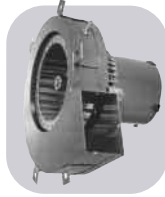


One-On-One™ Direct Replacement Motors

ONE-ON-ONE



Skymark

MARS NO.	MFG. NO.	HP	VOLTS	RPM/SPD	ROT AMPS	DIMENSIONS		
						A	B	C
A251	-	1/35	208-230	3000/1	CCW 1.1	-	-	-

3.3 inch, Shaded pole, sleeve bearing, 50/60Hz

Replaces: 7021-9136, MTR-136PK



Tecumseh

MARS NO.	MFG. NO.	HP	VOLTS	RPM/SPD	ROT AMPS	DIMENSIONS			
						A	B	C	
D475	-	1/12	460	1550/1	CCW 0.50	2.50	4.50	5/16	

3.3 inch, Shaded pole, sleeve bearing, 5/16 inch dia. shaft

Replaces: Tecumseh 810G037A47, 5KCP11FG1197CS



Snyder/Arco

MARS NO.	MFG. NO.	HP	VOLTS	RPM/SPD	ROT AMPS	DIMENSIONS		
						A	B	C
03219	5KCP39D GP089S	1/10	208-230	825/1	CCW OSE 0.70	3.00	3.70	-

5.5 inch diam., totally enclosed, extended clamp screws, 5 @ 370V cap required (MARS No. 12005)

Replaces: 5KCP39DGGK093S



Tecumseh

MARS NO.	MFG. NO.	HP	VOLTS	RPM/SPD	ROT AMPS	DIMENSIONS			
						A	B	C	
00353	ESP-L35EM2	35W	230	1500/1	CCW OSE 0.70	0.50	3.50	1/4	

3.875 inch diam., cast iron unit bearing motor, end or side pad mounting, horizontal operation, 1/4" threaded shaft

Replaces: Tecumseh TFM352, 810A10-B, 810M035A21, 810M035A28, 81091-R



State Ind.

MARS NO.	MFG. NO.	HP	VOLTS	RPM/SPD	ROT AMPS	DIMENSIONS		
						A	B	C
W9	-	1/60	115	3000/1	CW 0.95	-	-	-

3.3 inch, Shaded pole, sleeve bearing, water heater draft inducer

Replaces: 7021-10548, 0012400500



Tecumseh

MARS NO.	MFG. NO.	HP	VOLTS	RPM/SPD	ROT AMPS	DIMENSIONS			
						A	B	C	
00507	ESP- OL50EMJR21	50W	230	1500/1	CCW OSE 0.85	-	4.30	5/16	

3.875 inch diam., open 3 tapped holes shaft end or side pad mount, shaded pole, 5/16 inch shaft dia. 2" shaft length

Replaces: Tecumseh No. 810M050A62, 810E02674



State Ind.

MARS NO.	MFG. NO.	HP	VOLTS	RPM/SPD	ROT AMPS	DIMENSIONS		
						A	B	C
W10	-	1/20	115	3400/1	CCW 1.80	-	-	-

3.3 inch, Shaded pole, sleeve bearing, water heater draft inducer

Replaces: 7021-11086, 0012400540



Tecumseh

MARS NO.	MFG. NO.	HP	VOLTS	RPM/SPD	ROT AMPS	DIMENSIONS			
						A	B	C	
01336	5KSM92K FL2008S	1/20	230	1550	CW OSE 1.1	2.00	4.20	-	

4 inch diam., open, end mounting, shaded pole, 5/16 inch shaft

Replaces: 5KSP11FG1377, 5KSP11FG1541SEmerson F33HXFRH-2649 Tecumseh 810G037A48 and 810E026A74

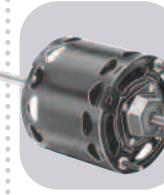


Taco

MARS NO.	MFG. NO.	HP	VOLTS	RPM/SPD	ROT AMPS	DIMENSIONS		
						A	B	C
4722	5KH39QN5 558T	1/12	115	1800/1	CCW OSE 2.1	1.00	7.29	-

48Y frame, open air over, single split phase, resilient ring mount, sleeve bearing, former MARS # X700

Replaces: Taco 110-388, Marathon 48S17D1027, 48S17D2102



Thermador (Tradewinds)

MARS NO.	MFG. NO.	HP	VOLTS	RPM/SPD	ROT AMPS	DIMENSIONS			
						A	B	C	
D1165	-	1/20	115	1550/1	DS 2.0	3.50	-	5/16	

3.3 inch, Shaded pole, sleeve bearing, 5/16 inch dia. shaft

Replaces: Tradewinds/Blower Motors



Taco

MARS NO.	MFG. NO.	HP	VOLTS	RPM/SPD	ROT AMPS	DIMENSIONS		
						A	B	C
4404	5KH39QN5 550X	1/8	115	1800/1	CCW OSE 2.6	1.50	8.93	-

48Y frame, open air over, single split phase, resilient ring mount, sleeve bearing, former MARS No. X701

Replaces: GE 5KH32EG129GA, Marathon 48S17D1084



Thermador (Tradewinds)

MARS NO.	MFG. NO.	HP	VOLTS	RPM/SPD	ROT AMPS	DIMENSIONS			
						A	B	C	
D1155	-	1/100	115	1085/1	CCW 0.50	1.00	-	1/4	

3.3 inch, Shaded pole, sleeve bearing, 1/4 inch dia. shaft

Replaces: 17-09-679, VQT-90, JA2M087R



Tappan

MARS NO.	MFG. NO.	HP	VOLTS	RPM/SPD	ROT AMPS	DIMENSIONS		
						A	B	C
A073	-	73CF M 230	115	3000/1	CCW 0.70/0. 35	-	-	-

3.3 inch, Shaded pole, ball bearing

Replaces: 82932, 8251560133



Thermal Transfer

MARS NO.	MFG. NO.	HP	VOLTS	RPM/SPD	ROT AMPS	DIMENSIONS			
						A	B	C	
D1006	-	1/4	115	1600/1	CW 7.2	2.75	-	1/2	

3.3 inch, Shaded pole, sleeve bearing

Replaces: 7108-6544, 66098

