

Job Name/Location:

Tag #:

Date:

For:  File  Resubmit

PO No.:

Approval  Other \_\_\_\_\_

Architect:

GC:

Engr:

Mech:

Rep:

(Company)

(Project Manager)

**PMNFP14A0**  
PI485 for Outdoor Unit



**Electrical:**

Power Supply	220 VAC (from outdoor unit) 20" Wiring Harness (included)
--------------	--

**Surrounding Conditions:**

Operating Temperature	-4 - 176 °F
Storage Temperature	-4 - 176 °F
Humidity	0-98% (non-condensing)

**Unit Data:**

Dimensions	5-3/16" W x 3-5/16" H x 1-3/8" D
------------	----------------------------------

**Standard Features:**

- Adapt Duct-free Split Systems<sup>1</sup> to LG System Air Conditioner Central Control Protocol (LGAP) for integration with LG central controllers including AC Ez, ACP, AC Smart II, and BACnet® and LonWorks® Gateways.
- Double Multi V outdoor unit capacity per V-Net (From max 16 to max 32 systems)<sup>2</sup>

**Notes:**

- 1.Contact Engineering for list of compatible DFS units.
- 2.One PI485 required per outdoor unit.
- 3.Must follow installation instructions in the applicable LG installation manual.

**Connectivity:**

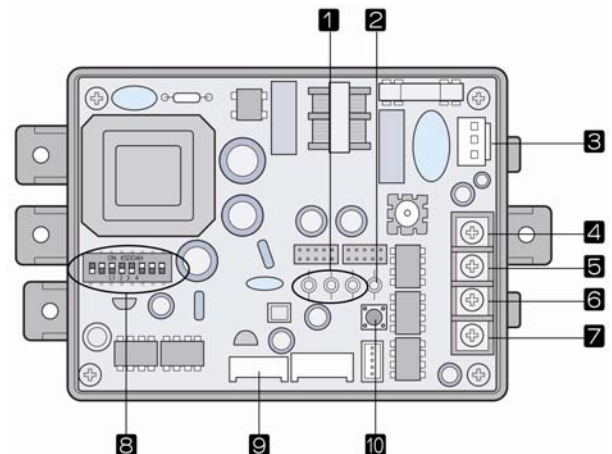
LG Communications	1 Channel/RS-485 V-Net 32" DFS Wiring Harness (included) 32" Multi V Wiring Harness (included)
-------------------	--

**Communications Cabling Specifications (V-Net):**

Type	2-conductor, stranded, shielded copper cable/PVC or vinyl jacket
Size	AWG 18-2
Maximum Length	3,280 ft (end-to-end)

AWG - American Wire Gage

**Description:**



- |  |                                  |
|--|----------------------------------|
| 1 LED01G,02G,03G: Communication Status LED | 6 BUS_A: RS-485 (+) Terminal     |
| 2 LED1: RS-485 Status LED                  | 7 BUS_B: RS-485 (-) Terminal     |
| 3 CN_PWR: AC 220V Connector                | 8 DIP Switch: Product Selection  |
| 4 +10V: DC 10V Terminal                    | 9 CN_OUT: Outdoor Unit Connector |
| 5 GND: Ground                              | 10 Reset Switch: PI485 (M) Reset |