

Job Name/Location:

Tag #:

Date:

For: File Resubmit
 Approval Other _____

PO No.:

Architect:

GC:

Engr:

Mech:

Rep:

(Company)

(Project Manager)

LC247HV
 Ceiling Cassette Single Zone
 Outdoor Unit (ODU) - LUU247HV Indoor Unit (IDU) - LCN247HV



Performance:

Cooling:

Cooling (Min-Rated-Max, Btu/h)	9,700 - 24,000 - 26,700
SEER	17
EER	12.6

SEER - Seasonal Energy Efficiency Ratio EER - Energy Efficiency Ratio

Heating:

Heating (Min-Rated-Max, Btu/h)	10,900 - 27,000 - 30,000
HSPF	9.7

HSPF - Heating Seasonal Performance Factor

Electrical:

Power Supply (V ¹ /Hz/Ø)	208-230/60/1
MOP (A)	30
MCA (A)	18.1
Cooling Rated Amps (A)	15.1
Heating Rated Amps (A)	15.1
Compressor (A)	13.5
Fan (A)	0.6
Cooling Power Input (kW)	1.91
Heating Power Input (kW)	2.60

MOP - Maximum Overcurrent Protection MCA - Minimum Circuit Ampacity

Piping:

Liquid Line (in, OD)	3/8
Suction Line (in, OD)	5/8
Additional Refrigerant (oz/ft)	0.43
Max Pipe Length (ft) ²	164
Pipe Length (no add'l Refrigerant, ft)	25
Max Elevation (ft)	98

Features:

- Inverter (Variable speed compressor)
- Internal condensate pump
- Swirl Wind
- Jet Cool
- Independent vane control
- Evaporator frost control
- Auto restart
- Auto changeover
- Ultra-quiet turbo fan
- Built-in low ambient standard, down to 5°F (cooling mode)
- Night quiet operation

Required Accessories (sold separately):

- Cassette Grille [PT-UMC1 or PT-UMC1B (Black)]

Optional Accessories (sold separately):

- LG Programmable Thermostat - PREMTB10U
- PI-485 - PMNFP14A1
- Ventilation³ Kit - PTVK410+PTVK420
- Auto Elevation Kit - PTEGMO
- Low Ambient Wind Baffle (Cooling operation to 0°F) - ZLABGP04A

Operating Range:

Outdoor Unit:

Cooling (°F DB)	5-118
Heating (°F WB)	0-64

Indoor Unit:

Cooling (°F WB)	57-77
Heating (°F DB)	59-81

Unit Data:

Refrigerant Type	R410A
Refrigerant Control	EEV
Refrigerant Charge (lbs)	4.41
IDU Sound Pressure (H/M/L) ±3 dB(A) ⁴	38/36/34
ODU Sound Pressure Max (Cool/Heat) ±3 dB(A) ⁴	48/52
ODU Net Unit Weight (lbs)	133
ODU Shipping Weight (lbs)	148
IDU Net Unit Weight (lbs)	46
IDU Shipping Weight (lbs)	55
Grille Weight (lbs)	11
Grille Shipping Weight (lbs)	20

Fan:

ODU Type	Propeller
IDU Fan Type	Turbo
Fan Speeds (Fan/Cooling/Heating)	4/5/4
Fan Quantity (ODU + IDU)	(1 + 1)
Motor/Drive	Brushless Digitally Controlled/Direct
ODU Air Circulation (CFM)	2,048
IDU Air Circulation (CFM H/M/L)	600/530/459
Dehumidification (pts/hr)	5.1

Notes:

1. Acceptable operating voltage: 187V - 253V.
2. Piping lengths are equivalent.
3. Must comply with applicable codes for fire isolation dampers.
4. Sound pressure levels are tested in an anechoic chamber under ISO Standard 1996.
5. All communication/power cable to be minimum 18 American wire gauge (AWG), 4-conductor, stranded, shielded and must comply with applicable local and national code.
6. This unit comes with a dry helium charge.
7. Nominal data is rated 0 ft above sea level, with 25 ft of refrigerant line and a 0 ft level difference between outdoor and indoor units.
8. Power wiring cable size must comply with the applicable local and national code.
9. Must follow installation instructions in the applicable LG installation manual.



For continual product development, LG reserves the right to change specifications without notice.

© LG Electronics U.S.A., Inc., Englewood Cliffs, NJ. All rights reserved. "LG Life's Good" is a registered trademark of LG Corp. /www.lghvac.com

Indoor Unit (IDU) - LCN247HV

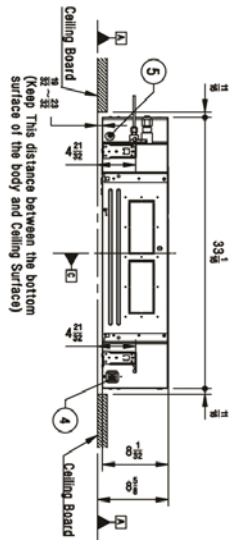
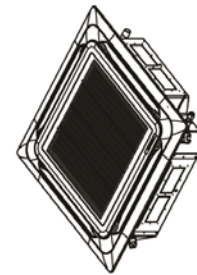
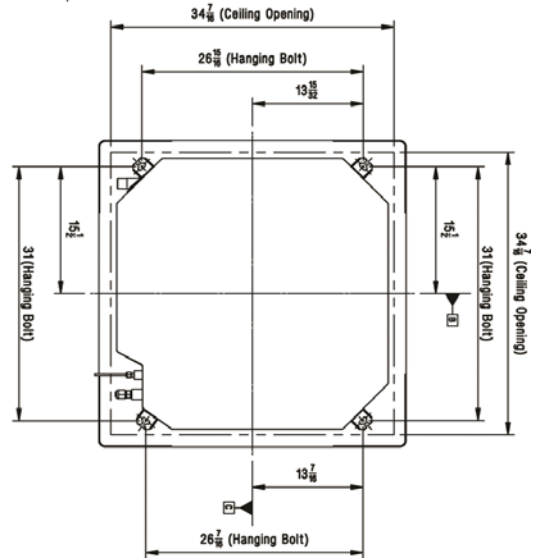
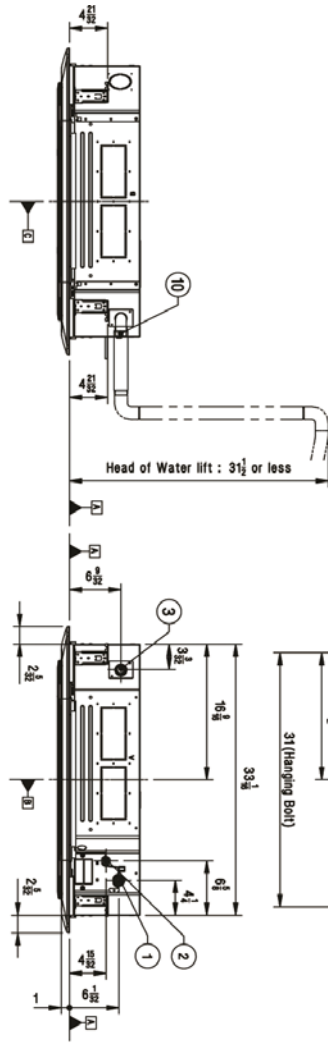
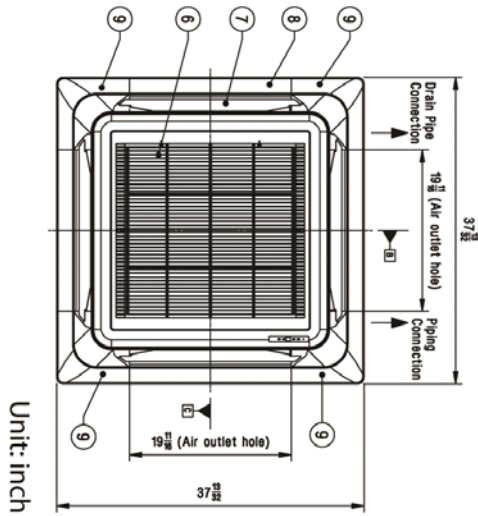
Ceiling Cassette Single Zone



Tag #: _____

Date: _____

PO No.: _____



No.	Part Name	Description
10	Flexible Drain Hose	Supplied with product
9	Decoration Corner Cover	Supplied with panel
8	Decoration Panel (Accessory)	PT-LMC1
7	Air Outlet	-
6	Air Inlet	-
5	Wired remote controller wire routing hole	-
4	Power and communication cable routing hole	-
3	Drain Pipe Connection	-
2	Liquid Pipe Connection	-
1	Gas Pipe Connection	-