

UNDERCOUNTERS

Side Mounted Condensing Unit

ET & ETG – Series

Reference Model : ETR2



Oversized Fans for Spacious Interior
Space-saving oversized evaporator fans provide optimal cooling for a more expansive cabinet interior.



Easy Clean Air Filter
Keep the condenser coil in top shape with a framed mesh filter that is removable and detergent-safe for a quick hassle-free cleaning.



Condensing Unit Slide-Out Grip
Heavy duty slide-out grip provides stability when pulling out the condensing unit.

Digital Control
Access advanced temperature options with a robust digital display and control system equipped with user friendly interface.

5" Overall Height Swivel Casters^b
Sturdy swivel casters or stationary leg variants come standard in select units.



Slide-Out Condensing Unit^a
Full condensing unit slides out in a few simple steps for easy access during maintenance and repairs.



Vacuum Relief U-Trap
U-Trap effectively relieves the cabinet of pressure for smooth and rapid door re-entry.



LED Lighting
(Only applicable to certain models)
Glass door refrigerators feature brilliant LED lighting that illuminate the cool stainless steel interior and guarantee the best visibility for your products.

Strong Door Seal
Heavy duty door hinge and gasket for air tight seal.

Rounded Exterior
Sleek, rounded corners in beautiful stainless steel will compliment any space.



Stainless Steel Backsplash (optional)
Protect from messy spills with an easy to install, matching stainless steel backsplash attachment.



Rear Bumpers
Rear bumpers allow for unobstructed ventilation of the refrigeration system.



Door Lock
(Only applicable to certain models)
Tamper-free, heavy duty door lock provides security options for any situation.



Epoxy Coated Shelves
Durable, epoxy coated shelves provide dependable storage options.



Shelf Clips
Heavy duty stainless steel shelf clips.



Stainless Steel Exterior & Interior
Rounded, high quality stainless steel exterior and interior provide an elegant and durable storage space.



Thick Insulation
2 1/2 inch thick insulated door allows better heat transfer for a stable cabinet temperature and improved energy efficiency.



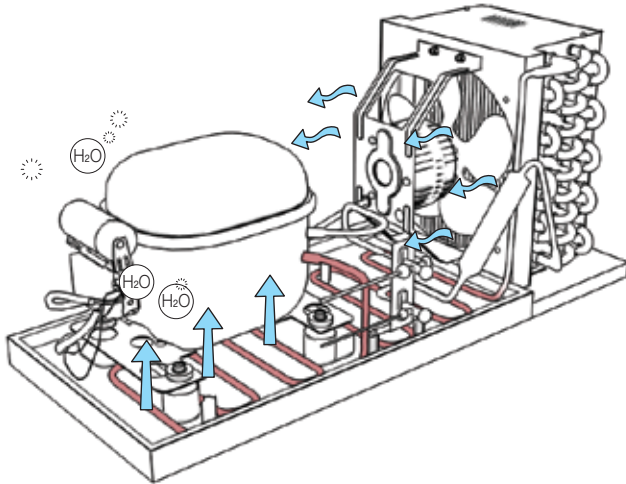
Heavy Duty Pilasters
Solid stainless steel pilasters support adjustable steel clips and white epoxy coated shelves for more storage options.

● Unit Exterior ○ Unit Interior



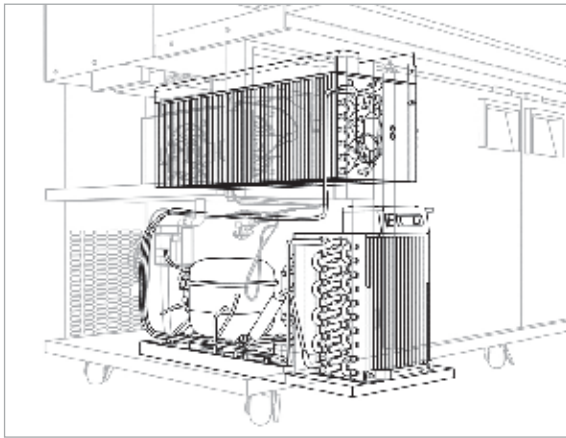
5 YEAR Compressor
3 YEAR Parts & Labor

Triple Function Hot Gas Pipe System^a



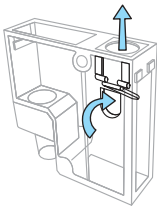
Do more with less energy thanks to the multitasking capabilities of the Triple Function Hot Gas Pipe System. Like its counterpart, it significantly boosts energy efficiency without relying on electrical heaters. The deliberate routing of hot gas through well-placed high pressure pipes removes surplus heat from the condenser coil, cools down the compressor and quickens the evaporation of overflow moisture in the self-contained hot gas pipe assembly. What this means is a symbiotic set up that recycles energy instead of wasting it.

Slide-Out Condensing Unit^a



Space and accessibility is vital to the proper care and maintenance of equipment. The side-mounted condensing unit is designed with this in mind. The front grill unlatches with ease to reveal the condensing unit chamber. The entire carriage slides out in just a few easy steps for unrestricted access to the refrigeration components.

Vacuum Relief Mechanisms

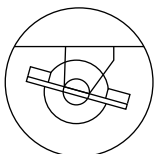


The U-Trap further equalizes air pressure thanks to a responsive air flap that quickly swings open whenever a door is opened or closed.



The ridge-Lined Door Gasket greatly reduces surface suction between the door and the door frame while still maintaining an air tight seal.

Heavy Duty Swivel Casters^b



Sturdy swivel casters or stationary legs in 5" or 3 1/2" (total height) variants come standard.

Specifications subject to change without notice.

Product dimensions are for general purposes and not absolute value. Product capacity is calculated based on standard industry figures. Slight variations may exist. If dimensions and capacity are critical, please contact Everest Refrigeration.