

# UNDERCOUNTERS

## Back Mounted Condensing Unit

**ETB – Series**

Reference Model : ETBR3-D2



**Analog Control**  
Effortlessly adjust your equipment to the desired temperature with the classic, easily accessible analog thermostat located in the cabinet interior.



**Door Lock (Only applicable to certain models)**  
Tamper-free, heavy duty door lock provides security options for any situation.

**Rounded Exterior**  
Sleek, rounded corners in beautiful stainless steel will compliment any space.

**Strong Door Seal**  
Heavy duty door hinge and gasket for air tight seal.



**Front Breathing Vents**  
Efficient ventilation system draw and discharge air from the front grill maximizing space and energy usage.

**5" Overall Height Swivel Casters<sup>b</sup>**  
Sturdy swivel casters or stationary leg variants come standard in select units.



**Stainless Steel Exterior & Interior**  
Rounded, high quality stainless steel exterior and interior provide an elegant and durable storage space.



**Dual Evaporator Fan Motors**  
Preserving your food to the highest quality is a breeze with our powerful dual evaporator fan system.



**Rear Bumpers**  
Rear bumpers allow for unobstructed ventilation of the refrigeration system.



**Stainless Steel Backslash (optional)**  
Protect from messy spills with an easy to install, matching stainless steel backslash attachment.



**Heavy Duty Drawer Slides (Only applicable to certain models)**  
Thick gauge metal drawer slides and durable smooth-glide rollers provide stable support to drawers and are easily disassembled for regular cleaning.



**Thick Insulation (Only applicable to certain models)**  
2 1/2 inch thick insulated door allows better heat transfer for a stable cabinet temperature and improved energy efficiency.



**Defrost Timer**  
Tamper-free defrost timer can be easily accessed and reset in a few simple steps.



**Vacuum Relief U-Trap**  
U-Trap effectively relieves the cabinet of pressure for smooth and rapid door re-entry.



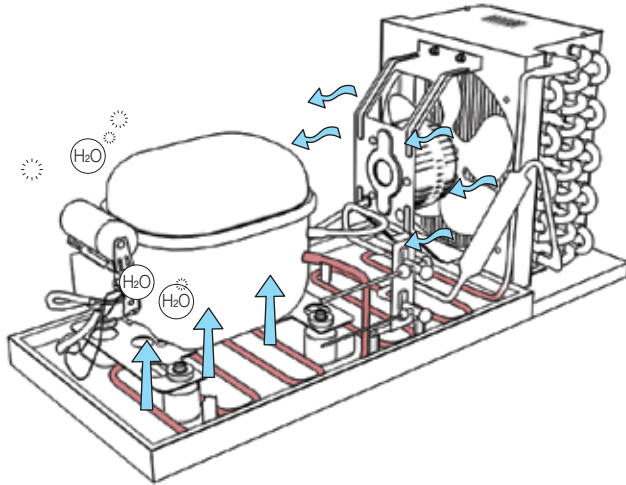
**Slide-Out Condensing Unit<sup>a</sup>**  
Back mounted condensing unit slides out in just a few easy steps for unrestricted access to the refrigeration components.

● Unit Exterior ○ Unit Interior



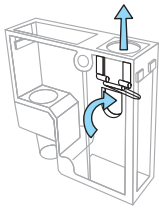
**5 YEAR Compressor**  
**3 YEAR Parts & Labor**

### Triple Function Hot Gas Pipe System<sup>a</sup>



Do more with less energy thanks to the multitasking capabilities of the Triple Function Hot Gas Pipe System. Like its counterpart, it significantly boosts energy efficiency without relying on electrical heaters. The deliberate routing of hot gas through well-placed high pressure pipes removes surplus heat from the condenser coil, cools down the compressor and quickens the evaporation of overflow moisture in the self-contained hot gas pipe assembly. What this means is a symbiotic set up that recycles energy instead of wasting it.

### Vacuum Relief Mechanisms

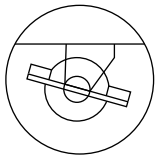


The U-Trap further equalizes air pressure thanks to a responsive air flap that quickly swings open whenever a door is opened or closed.



The ridge-Lined Door Gasket greatly reduces surface suction between the door and the door frame while still maintaining an air tight seal.

### Heavy Duty Swivel Casters<sup>b</sup>



Sturdy swivel casters or stationary legs in 5" or 3 1/2" (total height) variants come standard.

Specifications subject to change without notice.

Product dimensions are for general purposes and not absolute value. Product capacity is calculated based on standard industry figures. Slight variations may exist. If dimensions and capacity are critical, please contact Everest Refrigeration.