



Model BT11NP



Model BT21NP

Non-Programmable Thermostats

BT11NP 1 Heat / 1 Cool Conventional or
1 Heat / 1 Cool Heat Pump

BT21NP Up to 2 Heat / 1 Cool
Conventional and Heat Pump

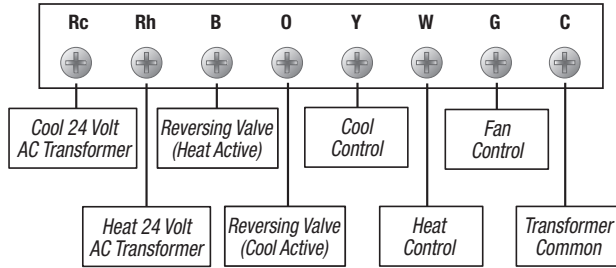
Product Features

- ESD Guard™ Electronic Circuitry
- Bright Blue Backlight Display
- Adjustable Heat and Cool Temperature Limits
- Non-Volatile Memory Retains User Settings
- Easy Access Front Battery Door with Optional Contractor Branding
- Separate O & B Terminals
- Compressor Short Cycle Protection
- Separate Heating and Cooling Set Point Temperatures
- Dual Powered – Hardwired or Battery
- Front Access Reset Button
- F° / C° Switch
- Gas / Electric Fan Switch
- Mount to Horizontal Box
- Adjustable Temperature Differential(s)

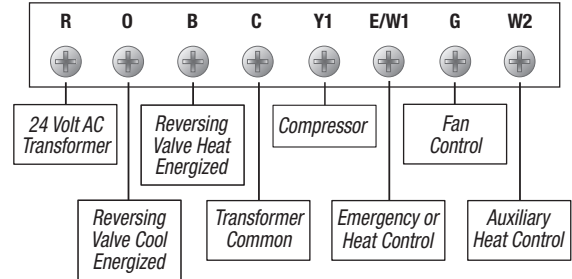


Non-Programmable Thermostats

BT11NP Terminal Designations



BT21NP Terminal Designations



Architectural Specifications

The digital non-programmable thermostats shall be BesTech™ model numbers BT11NP and BT21NP, 3.72" high x 4.75" wide x 1.12" deep, powered independently with either 24 Volt AC or with two "AA" Alkaline batteries (3.0 Volt DC). The thermostats shall be compatible with gas, oil or electric heating or cooling systems including heat pumps and 250mv – 750mv millivolt heating systems. The thermostats shall have a bright blue backlight display, adjustable temperature limits, front loading battery door and separate sub-base for trouble free installation. Temperature control range shall be between 45° and 90°F (7° and 32°C), accuracy of +/- 1°F (+/- .5°C), humidity range between 5% and 95% relative humidity. The thermostat shall include non-volatile memory to retain user settings. Thermostats shall have three level low battery indication and a front reset button will return user settings to default values when pressed. The thermostats can be mounted to a horizontal junction box.

Product Specifications

| | |
|----------------------------------|---|
| Dimensions: | 3.72" x 4.75" x 1.12" |
| Electric Rating: | 24 Volt AC (18-30 Volt AC) 1 amp maximum load per terminal 2 amp total maximum load (all terminals) [BT11NP] 3 amp total maximum load (all terminals) [BT21NP] |
| AC Power: | 18 - 30 Volt AC |
| DC Power: | 3.0 Volts DC (2 "AA" Alkaline batteries included) |
| Compatibility: | Gas, oil or electric systems Heat pump systems 250mv – 750mv millivolt heating systems |
| Control Range: | 45° to 90° F (7° to 32° C) |
| Display Range: | 40° to 99° F (4° to 37° C) |
| Accuracy: | +/- 1° F (+/- .5° C) |
| Temperature Differential: | 1st Stage: .5°, 1°, or 2° F (.25°, .5°, or 1° C) 2nd Stage: (BT21NP Only) 2°, 3°, 4°, 5° or 6°F (1°, 1.5°, 2°, 2.5° or 3°C) |
| Storage Temperature: | 14° to 140° F (-10° to 60° C) |
| Operating Humidity: | 5% to 95% Relative Humidity |
| Terminations: | Rc, Rh, B, O, Y, W, G, C (BT11NP) R, O, B, C, Y1, E/W1, G, W2 (BT21NP) |

Shipping Information

INDIVIDUAL CARTON

Dimensions: 3.75" x 5.5" x 1.4"
Weight: .45 lbs.

MASTER CARTON

Quantity: 12
Dimensions: 9" x 4.25" x 11.5"
Cubic Feet: .25
Weight: 5.7 lbs.

BesTech™ BT11NP Replaces*

| | |
|-----------------------|--|
| Honeywell® | T87F, T834, TH1110, TH3110, T8400C, T8401C, T8034C |
| White-Rodgers® | 1D56, 1E56, 1E78-145, 1F56, 1F78-144 |
| Braeburn® | 1000, 1000NC, 1005, 1005NC |
| Robertshaw® | RS2110, 8400, 8401, 9200H/V, 9400, 9401, 9500 |
| ICM® | SC2000, SC2000L, SC2000N, SC2001, SC2001L, SC2001N, SC2010 |
| LuxPro® | PSD011W, PSD011B, PSD111, PSM400SA |

BesTech™ BT21NP Replaces*

| | |
|-----------------------|--|
| Honeywell® | TH1210, TH3210, T8411, T8424C |
| White-Rodgers® | 1F73-174, 1F79-111 |
| Braeburn® | 1200, 1200NC |
| Robertshaw® | RS2210, 8425-1, 9415, 9420, 9515, 9520 |
| ICM® | SC2200, SC2201, SC2201L, SC2201N, SC2210, SC2300, SC2301 |
| LuxPro® | PSDH121, PSD152 |

*Verify specific application requirements. All trademarks are the property of their respective owners.