



FCM4X Product Specifications

FAN COILS WITH OBSERVER™ COMMUNICATING CONTROL ALL MODELS

- 2, 3, 4, and 5 Tons
- Multi- position installation
- Communicating, self configuring when used with Observer Communicating Wall Control
- Smart Diagnostic for easier troubleshooting
- Bi- flow hard- shutoff R- 410A TXV metering device
- HUD approved for manufactured housing
- Sweat connections
- Primary and secondary brass drain connections
- Energy efficient variable speed ECM Motor
- Ultra- low power consumption during fan only operation
- High duct static capability
- Pre- painted galvanized sheet metal cabinet insulation with vapor barrier
- Cabinet construction designed to prevent cabinet sweating
- Cabinet air leakage less than 2% at 0.5 in. W.C., and cabinet air leakage less than 1.4% at 0.5 in. W.C. when tested in accordance with ASHRAE standard 193.
- Modular cabinet on 5 ton model
- 208/230- 1- 60 supply voltage
- Multiple electrical entry for application flexibility
- Low voltage terminal strip
- Easy plug connection provided for quick installation of accessory heater packages
- Factory supplied washable filter easily removed - no tools required.

WARRANTY*

- 10 year No Hassle Replacement™ limited warranty
- 5 year parts limited warranty
 - With timely registration, an additional 5 year parts limited warranty

* For owner occupied, residential applications only. See warranty certificate for complete details and restrictions, including warranty coverage for other applications



Use of the AHRI Certified TM Mark indicates a manufacturer's participation in the program. For verification of certification for individual products, go to www.ahridirectory.org.



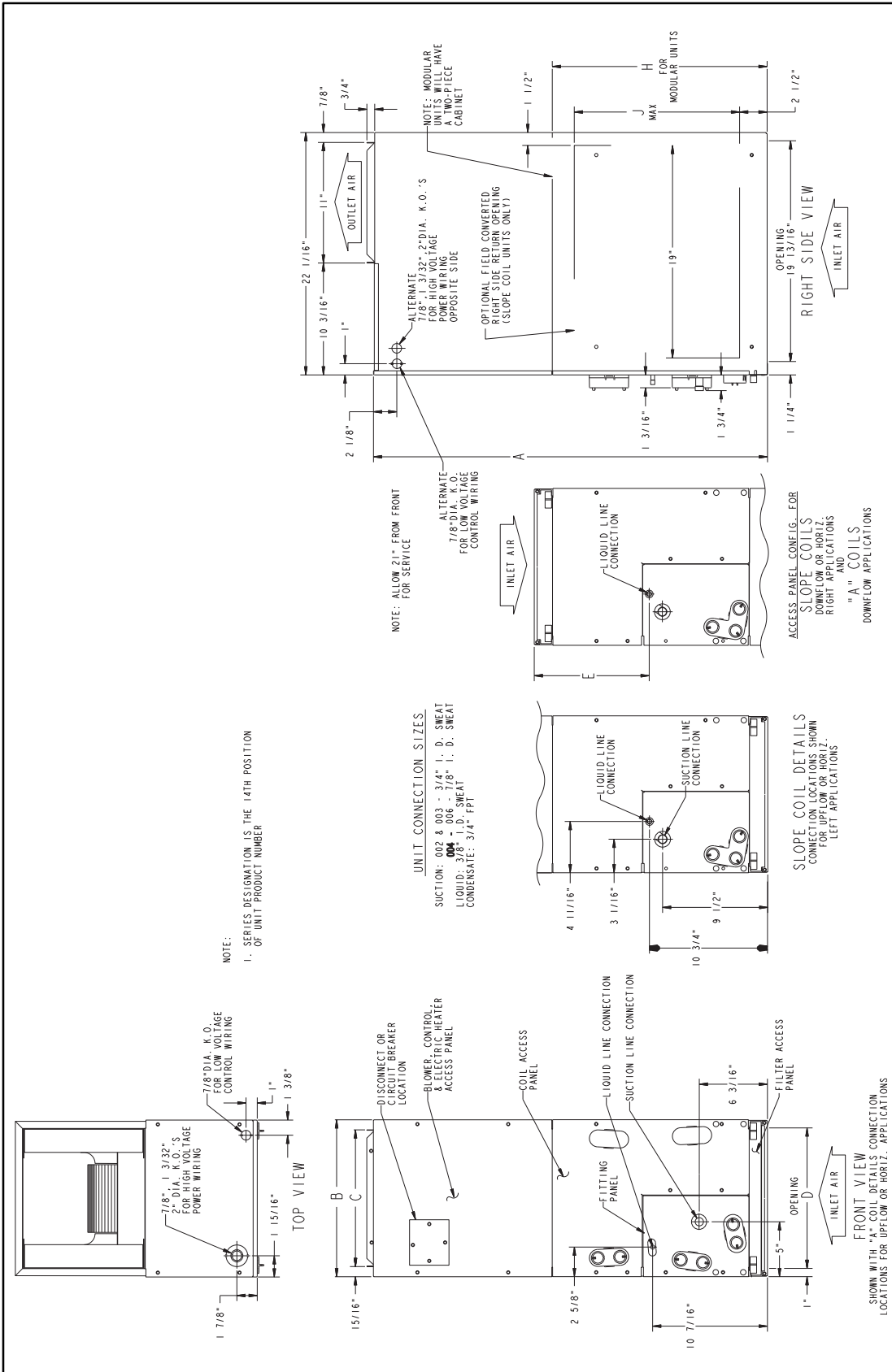
Model Number	Tons	Nom. CFM (L/s)	Dimensions H x W x D in. (mm)	Filter Size in. (mm)	Ship Wt lbs.(kg)
FCM4X2400**	2	800 (378)	42- 11/16 x 17- 5/8 x 22- 1/16 (1084 x 448 x 560)	16- 3/8 x 21- 1/2 (416 x 546)	135 (61)
FCM4X3600**	3	1200 (566)	53- 7/16 x 21- 1/8 x 22- 1/16 (1357 x 537 x 560)	19- 7/8 x 21- 1/2 (505 x 546)	150 (68)
FCM4X4800**	4	1600 (755)	53- 7/16 x 21- 1/8 x 22- 1/16 (1357 x 537 x 560)	19- 7/8 x 21- 1/2 (505 x 546)	172 (78)
FCM4X6000**	5	1750 (826)	59- 3/16 x 24- 11/16 x 22- 1/16 (1503 x 627 x 560)	23- 5/16 x 21- 1/2 (592 x 546)	207 (94)

- ** A = Copper Tube, Aluminum Fin Evaporator Coil
 AL = Aluminum Tube, Aluminum Fin Evaporator Coil
 AT = Tin Coated Copper Tube, Aluminum Fin Evaporator Coil

FAN COIL MODEL NUMBER IDENTIFICATION GUIDE								
DIGIT POSITION	1	2	3	4	5	6,7,8,9	10	11
	F	C	M	4	X	1800	A	L
F = Fan Coil	UNIT							
V = Variable speed		MOTOR TYPE						
C = Communicating ECM								
M = Multiposition			INSTALLATION TYPE					
U = Upflow								
4 = Environmentally Sound R- 410A			REFRIGERANT					
X = TXV					METERING DEVICE			
2400 = 24,000 BTUH = 2 tons								
3600 = 36,000 BTUH = 3 tons								
4800 = 48,000 BTUH = 4 tons								
6000 = 60,000 BTUH = 5 tons						NOMINAL CAPACITY		
A = Copper Tube, Aluminum Fin Evaporator Coil								
AL = Aluminum Tube, Aluminum Fin Evaporator Coil								
AT = Tin Coated Copper Tube, Aluminum Fin Evaporator Coil							SALES CODE / FEATURES	

ACCESSORIES PART NUMBER IDENTIFICATION GUIDE						
		EB	AC	01	NCB	A
EB = Evaporator Blower						
AC = Accessory						
01 = Product Identifier Number						
NCB = Non- Combustible Base Kit						
DFK = Down Flow Kit						
PLG = Power Plug (no heat kit)						
SPK = Single Point Wiring Kit						
FKS = Filter Kit Small						
FKM = Filter Kit Medium						
FKL = Filter Kit Large						
FKX = Filter Kit Extra Large						
CTK = Condensate Trap Kit (PVC pipe)						
Sales Code						

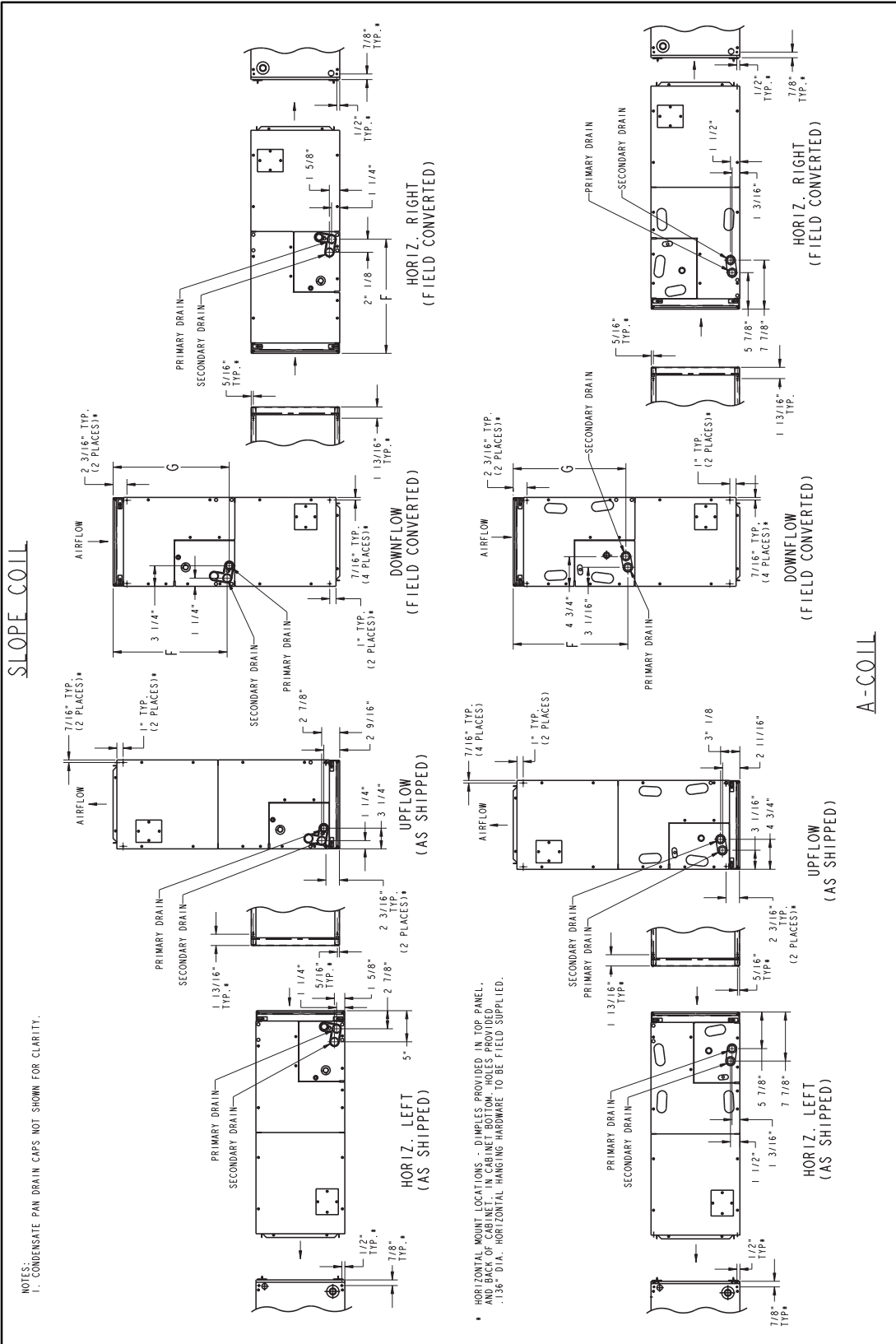
ELECTRIC HEATER MODEL NUMBER IDENTIFICATION GUIDE						
	EHC	09	A	K	N	1
EHC = Communicating Electric Heater Kit						
EHK = Standard Electric Heater Kit						
05 = 5 kW						
07 = 8 kW						
09 = 9 kW						
10 = 10 kW						
15 = 15 kW						
18 = 18 kW						
20 = 20 kW						
25 = 24 kW						
30 = 30 kW		NOMINAL HEAT VALUE				
Sales Code						
K = 208 / 230 single- phase						
H = 208 / 230, 3- phase						
KC = 208 / 230, supplied as single phase, field convertible to 3- phase						
HC = 208 / 230 supplied as 3- phase, field convertible to single phase				VOLTAGE (60 Hz)		
N = No protection						
F = Fused						
B = Breaker					Electrical Protection	
Engineering Code						



DIMENSIONS

MODEL NUMBER	A		B		C		D		E		H*	
	in	mm	in	mm	in	mm	in.	mm	in	mm	in	mm
FCM4X24	42- 11/16	1084	17- 5/8	448	15- 3/4	400	15- 5/8	397	10- 3/4	273	—	—
FCM4X36	53- 7/16	1357	21- 1/8	537	19- 1/4	489	19- 1/8	486	19- 3/16	487	—	—
FCM4X48	53- 7/16	1357	21- 1/8	537	19- 1/4	489	19- 1/8	486	19- 1/2	495	—	—
FCM4X60*	59- 3/16	1503	24- 11/16	627	22- 3/4	578	22- 11/16	576	25- 1/4	641	34- 1/16	865

* Modular Cabinet



DIMENSIONS

MODEL NUMBER	F		G		COIL CONFIGURATION		SHIPPING WEIGHT
	in	mm	in	mm	Slope	"A"	
FCM4X24	18- 9/16	472	18- 1/4	464	—	Yes	135 / 61
FCM4X36	26- 15/16	684	27- 1/2	699	Yes	—	150 / 68
FCM4X48	27- 1/4	692	26- 15/16	684	—	Yes	172 / 78
FCM4X60*	32- 15/16	837	32- 5/8	829	—	Yes	207 / 94

* Modular Cabinet

PHYSICAL DATA				
MODEL	FCM4X			
SIZE	24	36	48	60
COIL				
Refrigerant Metering Device	R- 410A REFRIGERANT TXV			
TXV Size	2 Ton	3 Ton	4 Ton	5 Ton
Configuration	A	Slope	A	A
Rows—Fins/In.	3 / 14.5			
Face Area (Sq Ft)	3.46	3.46	5.93	7.42
MATCHES OUTDOOR UNIT SIZES				
Nominal Cooling Tons	1.5, 2, 2.5, 3	2, 2.5, 3, 3.5	2.5, 3, 3.5, 4	3, 3.5, 4, 5
FAN				
Air Discharge	Upflow, Downflow, Horizontal			
CFM/Ton (Nominal Clg/Htg)	350+			
Motor HP (ECM)	1/2	1/2	1/2	3/4
Filter 21- 1/2- in (546 mm) x	16- 3/8- in (417 mm)	19- 7/8- in (505 mm)	19- 7/8- in (505 mm)	23- 5/16- in (592 mm)
CABINET CONFIGURATION OPTIONS				
	1- piece	1- piece	1- piece	Modular

PERFORMANCE DATA

AIRFLOW DELIVERY — COOLING, HEATING, ELECTRIC HEATING MODES

The FCM4X fan coils with the Observer™ Communicating Wall Control will provide airflow at a rate that is requested by the wall control during air conditioning or heat pump heating (without electric heat) modes. The nominal airflow for both heating and cooling modes is 350 cfm/ton nominal size of the outdoor unit installed. The airflow actually requested by the wall control is modified by its internal algorithms for comfort or efficiency

concerns. Refer to the documentation for the wall control for more information on how the wall control controls the fan coil. Safe operation of electric heaters requires airflow delivery at or above the minimum CFM for electric heater application listed in the chart below. The fan coil will adjust its airflow delivery to maintain safe airflow as operating mode and staging conditions require.

FCM4X FAN COIL AIRFLOW DELIVERY CHART (CFM) — ELECTRIC HEATING MODELS

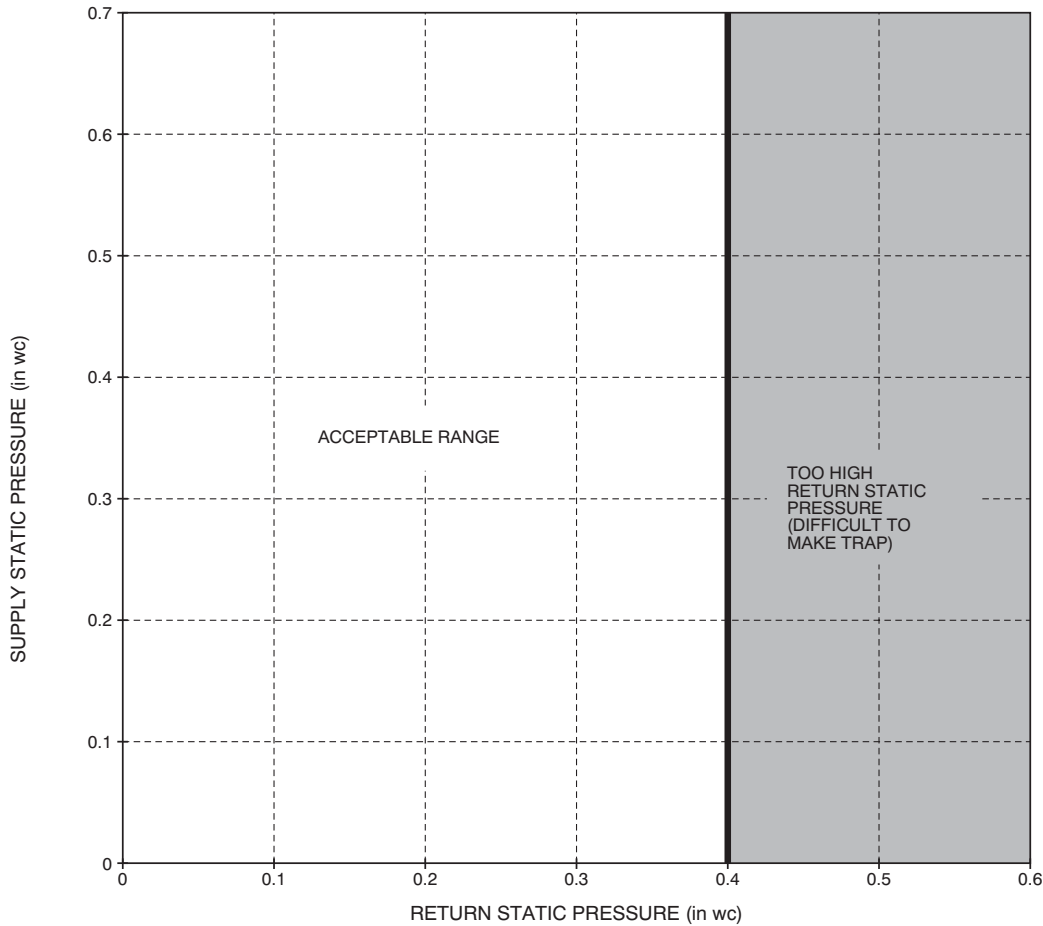
MODEL FCM4X	OUTDOOR UNIT CAPACITY BTUH	ELECTRIC HEATER kW RANGE						
		5	7-9	10	15	20	24-25	30
24	EMERGENCY	625	625	675	775	950	—	—
	18,000	625	625	675	—	—	—	—
	24,000	650	725	775	900	—	—	—
	30,000	800	875	875	925	1125	—	—
	36,000	975	975	975	1025	1125	—	—
36	EMERGENCY	675	700	775	850	1050	—	—
	24,000	675	875	875	1100	1150	—	—
	30,000	800	875	875	1100	1150	—	—
	36,000	975	975	1025	1150	1250	—	—
	42,000	1125	1125	1125	1150	1350	—	—
48	EMERGENCY	675	700	775	850	1050	1400	1425
	30,000	800	875	875	1100	1150	—	—
	36,000	975	975	1025	1150	1250	—	—
	42,000	1125	1125	1125	1150	1250	—	—
	48,000	1305	1305	1305	1305	1350	1500	1600
60	EMERGENCY	1050	1050	1050	1050	1125	1750	1750
	36,000	1050	1050	1100	1350	1350	—	—
	42,000	1125	1125	1150	1350	1350	—	—
	48,000	1300	1300	1300	1350	1500	1750	1750
	60,000	1625	1625	1625	1625	1750	1750	1750

Note 1: Emergency - Air conditioner with electric heater application, or emergency heat.

Note 2: These airflows are minimum airflows as UL listed.

Note 3: Dashed entry indicates that the heater/fan coil/outdoor unit combination is not approved. Do not apply.

ACCEPTABLE DUCT CONDITIONS



For satisfactory operation (specifically making dry secondary trap), subject fan coils must be installed with duct systems which fall within the "Acceptable Range" illustrated above.

A07273

MINIMUM RPM TABLE

MODEL	SYSTEM SIZES	CFM RANGE	MIN RPM
FCM4X24	018, 024, 030, 036	150 - 1200	300
FCM4X36	024, 030, 036, 042	200 - 1400	285
FCM4X48	030, 036, 042, 048	250 - 1600	275
FCM4X60	036, 042, 048, 060	500 - 2000	275

MAXIMUM STATIC TABLE

MODEL	AIRFLOW DELIVERY	AVAILABLE STATIC PRESSURE
FCM4X24	525 CFM	1.00 in wc
	700 CFM	1.00 in wc
	875 CFM	1.00 in wc
	1050 CFM	0.80 in wc
	1200 CFM	0.60 in wc
FCM4X36	700 CFM	1.00 in wc
	875 CFM	1.00 in wc
	1050 CFM	1.00 in wc
	1225 CFM	1.00 in wc
FCM4X48	1400 CFM	0.80 in wc
	875 CFM	1.00 in wc
	1050 CFM	1.00 in wc
	1225 CFM	1.00 in wc
FCM4X60	1400 CFM	1.00 in wc
	1600 CFM	0.50 in wc
	1050 CFM	1.00 in wc
	1225 CFM	1.00 in wc
FCM4X60	1400 CFM	1.00 in wc
	1750 CFM	1.00 in wc
	2000 CFM	0.60 in wc
	1050 CFM	1.00 in wc

GROSS COOLING CAPACITIES (MBTUH)																
INDOOR COIL AIR		SATURATED TEMPERATURE LEAVING EVAPORATOR (°F / °C)														
		35 / 2			40 / 4			45 / 7			50 / 10			55 / 13		
CFM	EWB	TC	SHC	BF	TC	SHC	BF	TC	SHC	BF	TC	SHC	BF	TC	SHC	BF
FCM4X24																
500	72/22	40.19	19.65	0.00	36.23	17.59	0.00	31.86	15.48	0.00	27.00	13.31	0.00	21.65	11.11	0.00
	67/19	32.99	19.92	0.01	28.96	17.79	0.01	24.52	15.62	0.01	19.64	13.40	0.01	14.28	11.17	0.01
	62/17	26.44	20.11	0.01	22.36	17.93	0.01	17.93	15.73	0.01	13.56	13.56	0.03	11.28	11.28	0.19
650	72/22	49.76	24.23	0.00	44.85	21.76	0.00	39.40	19.20	0.00	33.36	16.55	0.01	26.66	13.83	0.01
	67/19	40.90	24.80	0.01	35.90	22.22	0.01	30.37	19.55	0.02	24.27	16.82	0.02	17.58	14.06	0.02
	62/17	32.84	25.24	0.02	27.75	22.56	0.02	22.25	19.85	0.02	17.13	17.13	0.06	14.25	14.25	0.21
875	72/22	61.99	30.08	0.00	55.87	27.15	0.00	49.04	24.04	0.01	41.48	20.80	0.02	33.10	17.46	0.02
	67/19	51.08	31.23	0.03	44.83	28.09	0.03	37.91	24.84	0.03	30.23	21.47	0.03	21.83	18.03	0.03
	62/17	41.11	32.14	0.03	34.76	28.88	0.03	27.91	25.53	0.04	22.04	22.04	0.10	18.33	18.33	0.25
1000	72/22	67.83	32.91	0.00	61.10	29.76	0.00	53.66	26.40	0.02	45.36	22.89	0.03	36.17	19.27	0.03
	67/19	55.96	34.39	0.04	49.12	31.01	0.04	41.53	27.48	0.04	33.11	23.83	0.04	23.88	20.06	0.04
	62/17	45.09	35.62	0.04	38.13	32.08	0.04	30.69	28.43	0.05	24.54	24.54	0.12	20.40	20.40	0.27
1250	72/22	77.77	37.84	0.00	70.13	34.30	0.03	61.59	30.55	0.05	52.04	26.60	0.05	41.42	22.50	0.05
	67/19	64.36	40.02	0.06	56.52	36.24	0.06	47.77	32.27	0.06	38.04	28.12	0.06	27.46	23.81	0.07
	62/17	51.98	41.92	0.06	44.00	37.93	0.06	35.61	33.77	0.08	29.12	29.12	0.16	24.20	24.20	0.30
FCM4X36																
600	72/22	43.01	20.98	0.00	38.69	18.78	0.00	33.92	16.51	0.00	28.64	14.18	0.00	22.85	11.81	0.01
	67/19	35.27	21.34	0.01	30.88	19.04	0.01	26.07	16.71	0.01	20.79	14.34	0.01	15.03	11.95	0.01
	62/17	28.24	21.59	0.01	23.81	19.25	0.01	19.05	16.90	0.02	14.56	14.56	0.05	12.11	12.11	0.21
800	72/22	53.83	26.15	0.00	48.40	23.49	0.00	42.36	20.71	0.00	35.72	17.83	0.02	28.38	14.89	0.02
	67/19	44.23	26.92	0.02	38.71	24.10	0.02	32.61	21.20	0.03	25.91	18.24	0.03	18.65	15.26	0.03
	62/17	35.47	27.49	0.03	29.87	24.58	0.03	23.89	21.65	0.03	18.67	18.67	0.09	15.51	15.51	0.24
1000	72/22	63.07	30.60	0.00	56.66	27.57	0.00	49.58	24.36	0.02	41.76	21.04	0.03	33.10	17.62	0.03
	67/19	51.91	31.82	0.04	45.41	28.58	0.04	38.24	25.24	0.04	30.31	21.78	0.04	21.76	18.29	0.05
	62/17	41.71	32.80	0.04	35.12	29.43	0.04	28.13	26.00	0.05	22.41	22.41	0.12	18.60	18.60	0.27
1200	72/22	71.01	34.48	0.00	63.77	31.12	0.02	55.79	27.57	0.04	46.95	23.88	0.05	37.18	20.08	0.05
	67/19	58.54	36.17	0.05	51.21	32.59	0.05	43.10	28.87	0.06	34.13	25.02	0.06	24.47	21.08	0.06
	62/17	47.12	37.60	0.06	39.70	33.86	0.06	31.89	30.00	0.07	25.83	25.83	0.15	21.43	21.43	0.29
1400	72/22	77.95	37.95	0.01	70.07	34.31	0.04	61.29	30.47	0.06	51.54	26.47	0.06	40.78	22.33	0.07
	67/19	64.44	40.15	0.07	56.37	36.28	0.07	47.43	32.24	0.07	37.54	28.04	0.07	26.89	23.69	0.08
	62/17	51.95	42.08	0.07	43.78	37.99	0.08	35.30	33.73	0.09	28.95	28.95	0.19	24.01	24.01	0.32
FCM4X48																
750	72/22	57.24	28.01	0.00	51.64	25.08	0.00	45.46	22.08	0.00	38.59	19.00	0.00	30.99	15.85	0.00
	67/19	46.98	28.35	0.00	41.29	25.33	0.00	35.01	22.24	0.00	28.09	19.09	0.00	20.47	15.90	0.01
	62/17	37.67	28.59	0.01	31.89	25.50	0.01	25.61	22.37	0.01	19.28	19.28	0.02	16.05	16.05	0.19
950	72/22	69.68	33.97	0.00	62.89	30.52	0.00	55.32	26.92	0.00	46.89	23.21	0.00	37.57	19.40	0.00
	67/19	57.29	34.68	0.01	50.33	31.06	0.01	42.64	27.33	0.01	34.14	23.51	0.01	24.80	19.63	0.01
	62/17	45.99	35.21	0.01	38.92	31.47	0.01	31.24	27.68	0.01	23.90	23.90	0.04	19.89	19.89	0.20
1150	72/22	80.80	39.28	0.00	72.96	35.40	0.00	64.17	31.32	0.00	54.37	27.06	0.01	43.48	22.66	0.01
	67/19	66.56	40.46	0.02	58.50	36.34	0.02	49.54	32.05	0.02	39.60	27.64	0.02	28.70	23.15	0.02
	62/17	53.51	41.36	0.02	45.29	37.07	0.02	36.38	32.70	0.02	28.26	28.26	0.07	23.51	23.51	0.22
1500	72/22	97.47	47.29	0.00	88.05	42.83	0.00	77.49	38.05	0.01	65.68	33.04	0.02	52.41	27.78	0.02
	67/19	80.52	49.40	0.03	70.85	44.58	0.03	60.01	39.53	0.03	47.89	34.25	0.03	34.64	28.83	0.04
	62/17	64.96	51.12	0.03	55.02	46.04	0.03	44.30	40.80	0.04	35.27	35.27	0.10	29.34	29.34	0.25
1700	72/22	105.61	51.26	0.00	95.43	46.52	0.01	84.03	41.43	0.03	71.21	36.06	0.03	56.82	30.42	0.03
	67/19	87.38	53.92	0.04	76.93	48.80	0.04	65.20	43.40	0.04	52.01	37.70	0.04	37.60	31.83	0.05
	62/17	70.60	56.17	0.04	59.87	50.74	0.04	48.32	45.08	0.05	38.96	38.96	0.13	32.40	32.40	0.27
FCM4X60																
1050	72/22	76.01	37.07	0.00	68.82	33.39	0.00	60.76	29.56	0.00	51.72	25.55	0.00	41.64	21.42	0.00
	67/19	62.63	37.91	0.01	55.22	34.04	0.01	46.97	30.03	0.01	37.78	25.89	0.01	27.60	21.64	0.01
	62/17	50.40	38.54	0.01	42.81	34.53	0.01	34.49	30.41	0.01	26.28	26.28	0.03	21.90	21.90	0.19
1300	72/22	89.66	43.58	0.00	81.26	39.43	0.00	71.77	35.02	0.00	61.13	30.39	0.00	49.17	25.55	0.01
	67/19	74.04	45.04	0.01	65.36	40.60	0.01	55.62	35.94	0.01	44.72	31.09	0.01	32.62	26.09	0.01
	62/17	59.73	46.18	0.01	50.78	41.52	0.02	40.97	36.70	0.02	31.77	31.77	0.06	26.48	26.48	0.21
1750	72/22	110.09	53.41	0.00	99.92	48.64	0.00	88.41	43.46	0.01	75.38	37.95	0.02	60.66	32.13	0.02
	67/19	91.28	56.16	0.02	80.74	50.96	0.03	68.83	45.42	0.03	55.35	39.55	0.03	40.35	33.42	0.03
	62/17	73.94	58.45	0.03	63.04	52.91	0.03	51.08	47.08	0.03	40.82	40.82	0.10	34.04	34.04	0.24
2050	72/22	121.19	58.89	0.00	110.14	53.79	0.01	97.57	48.25	0.02	83.25	42.30	0.03	67.02	35.98	0.03
	67/19	100.75	62.56	0.04	89.24	56.99	0.04	76.15	51.01	0.04	61.30	44.63	0.04	44.72	37.88	0.04
	62/17	81.81	65.71	0.04	69.88	59.72	0.04	56.88	53.37	0.05	46.27	46.27	0.12	38.60	38.60	0.26
2200	72/22	126.10	61.36	0.00	114.71	56.14	0.02	101.67	50.45	0.03	86.78	44.32	0.03	69.87	37.76	0.04
	67/19	104.99	65.51	0.04	93.05	59.79	0.04	79.44	53.62	0.04	63.97	47.02	0.04	46.71	40.00	0.05
	62/17	85.35	69.12	0.04	72.98	62.94	0.05	59.55	56.35	0.06	48.85	48.85	0.14	40.75	40.75	0.27

CFM - Cubic Ft per Minute EWB - Entering Wet Bulb (°F / °C) LWB - Leaving Wet Bulb (°F / °C) TC - Gross Cooling Capacity 1000 Btuh
 SHC - Gross Sensible Capacity 1000 Btuh BF - Bypass Factor MBH - 1000 Btuh
 See Notes on following page.

NOTES:

- Contact manufacturer for cooling capacities at conditions other than shown in table.
- Formulas:
 Leaving db = entering db - $\frac{\text{sensible heat cap.}}{1.09 \times \text{CFM}}$
 Leaving wb = wb corresponding to enthalpy of air leaving coil (h_{lwb})
 $h_{lwb} = h_{ewb} - \frac{\text{total capacity (Btuh)}}{4.5 \times \text{CFM}}$
 where h_{ewb} = enthalpy of air entering coil. Direct interpolation is permissible. Do not extrapolate.
- SHC is based on 80°F db temperature of air entering coil. Below 80°F db, subtract (Correction Factor x CFM) from SHC. Above 80°F db, add (Correction Factor x CFM) to SHC.
- Bypass Factor = 0 indicates no psychometric solution. Use bypass factor of next lower EWB for approximation.

SHC CORRECTION FACTOR

BYPASS FACTOR	ENTERING AIR DRY-BULB TEMPERATURE (°F)						Use formula shown below
	79	78	77	76	75	Under 75	
	81	82	83	84	85	Over 85	
	Correction Factor						
0.10	.098	1.96	2.94	3.92	4.91		
0.20	0.87	1.74	2.62	3.49	4.36		
0.30	0.76	1.53	2.29	3.05	3.82		

Interpolation is permissible.
 Correction Factor = $1.09 \times (1 - \text{BF}) \times (\text{db} - 80)$

ESTIMATED SOUND POWER LEVEL (dBA)

MODEL	CONDITIONS		OCTAVE BAND CENTER FREQUENCY						
	CFM	ESP	63	125	250	500	1000	2000	4000
FCM4X24	400	0.25	61.0	57.0	55.0	50.0	48.0	46.0	42.0
	600	0.25	62.7	58.7	56.7	51.7	49.7	47.7	43.7
	800	0.25	64.0	60.0	58.0	53.0	51.0	49.0	45.0
	1000	0.25	65.0	61.0	57.0	56.0	52.0	50.0	46.0
	1200	0.25	65.8	61.8	57.8	56.8	52.8	50.8	46.8
	1400	0.25	66.4	62.4	58.4	57.4	53.4	51.4	47.4
FCM4X36	400	0.25	61.0	57.0	55.0	50.0	48.0	46.0	42.0
	600	0.25	62.7	58.7	56.7	51.7	49.7	47.7	43.7
	800	0.25	64.0	60.0	58.0	53.0	51.0	49.0	45.0
	1000	0.25	65.0	61.0	59.0	54.0	52.0	50.0	46.0
	1200	0.25	65.8	61.8	59.8	54.8	52.8	50.8	46.8
	1400	0.25	66.4	62.4	58.4	57.4	53.4	51.4	47.4
FCM4X48	400	0.25	61.0	57.0	55.0	50.0	48.0	46.0	42.0
	600	0.25	62.7	58.7	56.7	51.7	49.7	47.7	43.7
	800	0.25	64.0	60.0	58.0	53.0	51.0	49.0	45.0
	1000	0.25	65.0	61.0	59.0	54.0	52.0	50.0	46.0
	1200	0.25	65.8	61.8	59.8	54.8	52.8	50.8	46.8
	1400	0.25	66.4	62.4	58.4	57.4	53.4	51.4	47.4
FCM4X60	600	0.25	62.7	58.7	56.7	51.7	49.7	47.7	43.7
	800	0.25	64.0	60.0	58.0	53.0	51.0	49.0	45.0
	1000	0.25	65.0	61.0	59.0	54.0	52.0	50.0	46.0
	1200	0.25	65.8	61.8	59.8	54.8	52.8	50.8	46.8
	1400	0.25	66.4	62.4	60.4	55.4	53.4	51.4	47.4
	1600	0.25	67.0	63.0	61.0	56.0	54.0	52.0	48.0
FCM4X60	1800	0.25	67.5	63.5	59.5	58.5	54.5	52.5	48.5
	2000	0.25	68.0	64.0	60.0	59.0	55.0	53.0	49.0
	2150	0.25	68.3	64.3	60.3	59.3	55.3	53.3	49.3

*Est. sound power levels have been derived using the method described in the 1987 ASHRAE HVAC Systems & Applications Handbook, chapter 52, p. 52.7.

AIRFLOW PERFORMANCE CORRECTION FACTORS

HEATER KW	ELEMENTS	STATIC PRESSURE CORRECTION (in wc)	
		Sizes 24-48	Size 60
0	0	+02	+03
5	1	+01	+02
8, 10	2	0	0
9, 15	3	-.02	-.03
20	4	-.04	-.06
18, 24, 30	6	-.06	-.10

The FCM4X airflow performance table was developed using fan coils with 10kW electric heaters (2 elements) in the units. For fan coils with heaters made up of a different number of elements, the external available static at a given CFM from the table may be corrected by adding or subtracting pressure. Use table for this correction.

FACTORY-INSTALLED FILTER STATIC PRESSURE DROP (in wc)

MODEL FCM4X	CFM								
	400	600	800	1000	1200	1400	1600	1800	2000
24	0.020	0.044	0.048	0.072	0.100	—	—	—	—
36	—	0.020	0.035	0.051	0.070	0.092	—	—	—
48	—	—	0.035	0.051	0.070	0.092	0.120	—	—
60	—	—	—	0.038	0.053	0.070	0.086	0.105	0.133

AIR DELIVERY PERFORMANCE CORRECTION COMPONENT PRESSURE DROP (in wc) AT INDICATED AIRFLOW (DRY TO WET COIL)											
MODEL FCM4X	CFM										
	600	700	800	900	1000	1100	1200	1300	1400	1500	1600
24	0.012	0.016	0.022	0.028	0.034	0.040	0.049	—	—	—	—
36	—	0.026	0.034	0.042	0.052	0.063	0.075	0.083	0.091	0.098	0.110
48	—	0.006	0.008	0.010	0.012	0.015	0.017	0.020	0.023	0.027	0.030
MODEL FCM4X	CFM										
	1100	1200	1300	1400	1500	1600	1700	1800	1900	2000	2100
60	0.013	0.016	0.018	0.020	0.023	0.027	0.030	0.034	0.039	0.044	0.048

NOTE: Subtract the above pressure drop corrections from unit airflow data when that component or condition is used. The remaining external static pressure will be available for the duct system.

UNITS WITHOUT ELECTRIC HEAT						
MODEL FCM4X	VOLTS- PHASE	FLA	MIN CKT AMPS	BRANCH CIRCUIT		
				Min Wire Size Awg*	Fuse/Ckt Bkr Amps	
24	208/230- 1	4.3	5.4	14	15	
36	208/230- 1	4.3	5.4	14	15	
48	208/230- 1	4.3	5.4	14	15	
60	208/230- 1	6.8	8.5	14	15	

* Use copper wire only to connect unit. If other than uncoated (non- plated) 75 C ambient, copper wire (solid wire for 10 AWG and smaller, stranded wire for larger than 10 AWG) is used consult applicable tables of the National Electric Code (ANSI/NFPA 70).

NOTE: If branch circuit wire length exceeds 100 ft / 30.5 m, consult NEC 210- 19a to determine maximum wire length. Use 2% voltage drop.
FLA — Full Load Amps

ELECTRIC HEATER INTERNAL PROTECTION			
HEATER KW	PHASE	FUSES QTY / SIZE	CKT BKR QTY / SIZE*
5	1	—	1/60
8	1	—	1/60
9	1/3	—	—
15	1	2/30, 2/60	2/60
15	3	—	—
18	3	—	—
20	1	4/60	2/60
24	3/1	6/60	—
30	3/1	6/60	—

* All circuit breakers are 2 pole.

EHC ELECTRIC HEATER ELECTRICAL DATA

BRANCH CIRCUIT

Heater Model	Heater kW		Internal Circuit Protection	HEATER AMPS 208/230V			Min Ampacity ☆ 208/230V		Min Wire Size (AWG) 208/230V ¹			Min Gnd Wire Size 208/230V			Max Fuse/Ckt Bkr Amps 208/230V			Max Wire Length 208/230V (FT) ^{††}		
	230v	208v		Dual Circuit			Dual Circuit		Dual Circuit			Dual Circuit			Dual Circuit			Dual Circuit		
				Single Circuit	L1,L2	L3,L4	Single Circuit	L1,L2	L3,L4	Single Circuit	L1,L2	L3,L4	Single Circuit	L1,L2	L3,L4	Single Circuit	L1,L2	L3,L4	Single Circuit	L1,L2
EHC09AKCN†	9	6.8	1	None	32.8/36.0	—	—	49.5/53.5	8/6	—	—	10/10	—	—	50/60	—	—	54/87	—	—
EHC15AKF	9	6.8	3	None	18.8/20.8	—	—	32.0/34.5	8/8	—	—	10/10	—	—	35/35	—	—	83/85	—	—
EHC15AKB	15	11.3	1	Fuse	54.2/59.9	36.2/40.0	18.1/20.0	76.3/83.4	4/4	6/6	10/10	8/8	10/10	10/10	80/90	60/60	25/25	88/89	78/80	75/76
EHC20AKF	15	11.3	1	Ckt Bkr	—	36.2/40.0	18.1/20.0	—	—	6/6	10/10	—	10/10	10/10	—	60/60	25/25	—	78/80	75/76
EHC20AKB	20	15.0	1	Fuse	72.3/79.9	36.2/40.0	36.2/40.0	98.9/108.4	3/2	6/6	8/8	8/6	10/10	10/10	100/110	60/60	50/50	85/109	78/80	59/59
EHC20AKB	20	15.0	1	Ckt Bkr	—	36.2/40.0	36.2/40.0	—	—	6/6	8/8	—	10/10	10/10	—	60/60	50/50	—	78/80	59/59
EHC25AHCF†	24	18.0	3	Fuse	50.1/55.4	—	—	71.2/77.8	4/4	—	—	8/8	—	—	80/80	—	—	94/95	—	—
EHC25AHCF†	24	18.0	1	Fuse	86.7/95.5	—	—	116.9/127.9	1/1	—	—	6/6	—	—	125/150	—	—	115/116	—	—
EHC30AHCF†	30	22.5	3	Fuse	62.6/69.2	—	—	86.8/95.0	3/3	—	—	8/8	—	—	90/100	—	—	97/98	—	—
EHC30AHCF†	30	22.5	1	Fuse	109.0/120.0	—	—	144.8/158.5	0/00	—	—	6/6	—	—	150/175	—	—	117/115	—	—

FIELD MULTIPOINT WIRING OR 24 AND 30 KW SINGLE PHASE

Heater Model	Heater kW		P H A S E	Heater Amps 208/230V			Minimum Circuit Ampacity 208/230V ☆			Minimum Wire Size (AWG) 208/230V [†]			Min Gnd Wire Size 208/230V			Max Fuse/Ckt Bkr Amps 208/230V			Max Wire Length 208/230V (FT) ^{††}		
	230V	208V		Heater Amps 208/230V			Minimum Circuit Ampacity 208/230V ☆			Minimum Wire Size (AWG) 208/230V [†]			Min Gnd Wire Size 208/230V			Max Fuse/Ckt Bkr Amps 208/230V			Max Wire Length 208/230V (FT) ^{††}		
				L1, L2	L3, L4	L5, L6	L1, L2	L3, L4	L5, L6	L1, L2	L3, L4	L5, L6	Single Circuit	L1, L2	L3, L4	L5, L6	Single Circuit	L1, L2	L3, L4	L5, L6	
EHC25AHCF†	24	18.0	1	28.9/32.0	28.9/32.0	28.9/32.0	44.7/48.5	36.2/40.0	36.2/40.0	8/8	8/8	8/8	10/10	10/10	40/40	40/40	40/40	59/60	73/73	73/73	
EHC30AHCF†	30	22.5	1	36.2/40.0	36.2/40.0	36.2/40.0	53.8/58.5	45.3/50.0	45.3/50.0	6/6	8/8	8/8	10/10	10/10	50/50	50/50	50/50	78/80	59/59	59/59	

Notes:

- 1 Copper wire must be used. If other than uncoated (non-plated), 75° C ambient, copper wire (solid wire for 10 AWG and smaller, stranded wire for larger than 10 AWG) is used, consult applicable tables of the National Electric Code (ANSI/NFPA 70).
- ☆ Includes blower motor amps of largest Fan Coil used with heater.
- † Supplied as single phase, field convertible to 3-phase.
- †† Length shown is as measured one way along wire path between unit and service panel for a voltage drop not to exceed 2%.

EHK ELECTRIC HEATER ELECTRICAL DATA

Heater Model		Heater kW		Internal Circuit Protection	HEATER AMPS 208/230V			Min Wire Size (AWG) 208/230V ¹				Min Gnd Wire Size 208/230V				Max Fuse/Ckt Bkr Amps 208/230V		Max Wire Length 208/230V (Ft)##		
		230v	208v		Phase	Dual Circuit			Single Circuit		Dual Circuit		Single Circuit		Dual Circuit		Single Circuit		Dual Circuit	
						L1,L2	L3,L4	L1,L2	L3,L4	L1,L2	L3,L4	L1,L2	L3,L4	L1,L2	L3,L4	L1,L2	L3,L4	L1,L2	L3,L4	L1,L2
EHK05AKN*	5	3.8	1	None	18.1/20.0	—	—	26.0/28.4	—	10/10	—	—	10/10	—	30/30	—	66/66	—	—	
EHK05AKN**	5	3.8	1	None	18.1/20.0	—	—	31.2/33.5	—	8/8	—	—	10/10	—	35/35	—	85/88	—	—	
EHK05AKB*	5	3.8	1	Ckt Bkr	18.1/20.0	—	—	26.0/28.4	—	10/10	—	—	10/10	—	30/30	—	66/66	—	—	
EHK05AKB**	5	3.8	1	Ckt Bkr	18.1/20.0	—	—	31.2/33.5	—	8/8	—	—	10/10	—	35/35	—	85/88	—	—	
EHK07AKN	8	6.0	1	None	28.9/32.0	—	—	44.7/48.5	—	8/8	—	—	10/10	—	45/50	—	59/60	—	—	
EHK07AKB	8	6.0	1	Ckt Bkr	28.9/32.0	—	—	44.7/48.5	—	8/8	—	—	10/10	—	45/50	—	59/60	—	—	
EHK09AKNC†	9	6.8	1	None	32.8/36.0	—	—	49.5/53.5	—	8/8	—	—	10/10	—	50/60	—	54/87	—	—	
EHK09AKNC‡	9	6.8	3	None	18.8/20.8	—	—	32.0/34.5	—	8/8	—	—	10/10	—	35/35	—	83/85	—	—	
EHK10AKN	10	7.5	1	None	36.2/40.0	—	—	53.8/58.5	—	6/6	—	—	10/10	—	60/60	—	78/80	—	—	
EHK10AKB	10	7.5	1	Ckt Bkr	36.2/40.0	—	—	53.8/58.5	—	6/6	—	—	10/10	—	60/60	—	78/80	—	—	
EHK15AKF	15	11.3	1	Fuse	54.2/59.9	36.2/40.0	18.1/20.0	76.3/83.4	22.7/25.0	4/4	6/6	10/10	10/10	8/8	80/90	60/60	88/89	78/80	75/76	
EHK15AKB	15	11.3	1	Ckt Bkr	—	36.2/40.0	18.1/20.0	—	22.7/25.0	—	6/6	10/10	10/10	—	—	60/60	25/25	78/80	75/76	
EHK15AHN	15	11.3	3	None	31.3/34.6	—	—	47.7/51.8	—	8/6	—	—	10/10	—	50/60	—	56/90	—	—	
EHK18AHN	18	13.5	3	None	37.6/41.5	—	—	55.5/60.4	—	6/6	—	—	10/8	—	60/70	—	76/77	—	—	
EHK20AKF	20	15.0	1	Fuse	72.3/79.9	36.2/40.0	36.2/40.0	98.9/108.4	45.3/50.0	3/2	6/6	8/8	10/10	8/6	100/110	60/60	85/109	78/80	59/59	
EHK20AKB	20	15.0	1	Ckt Bkr	—	36.2/40.0	36.2/40.0	—	45.3/50.0	—	6/6	8/8	10/10	—	—	60/60	50/50	78/80	59/59	
EHK25AHCFF†	24	18.0	3	Fuse	50.1/55.4	—	—	71.2/77.8	—	4/4	—	—	8/8	—	80/80	—	94/95	—	—	
EHK25AHCFF‡	24	18.0	1	Fuse	86.7/95.5	—	—	116.9/127.9	—	1/1	—	—	6/6	—	125/150	—	115/116	—	—	
EHK30AHCFF†	30	22.5	3	Fuse	62.6/69.2	—	—	86.8/95.0	—	3/3	—	—	8/8	—	90/100	—	97/98	—	—	
EHK30AHCFF‡	30	22.5	1	Fuse	109.0/120.0	—	—	144.8/158.5	—	0/00	—	—	6/6	—	150/175	—	117/150	—	—	

FIELD MULTIPoint WIRING OR 24 AND 30 KW SINGLE PHASE

Heater Model	Heater kW	P H A S	Heater Amps 208/230V						Minimum Wire Size (AWG) 208/230V†			Minimum Circuit Ampacity 208/230V *			Min Gnd Wire Size 208/230V			Max Fuse/Ckt Bkr Amps 208/230V			Max Wire Length 208/230V (Ft)‡							
			230V		208V		18.0		22.5		L1, L2		L3, L4		L5, L6		L1, L2		L3, L4		L5, L6		L1, L2		L3, L4		L5, L6	
			L1, L2	L3, L4	L1, L2	L3, L4	L1, L2	L3, L4	L1, L2	L3, L4	L1, L2	L3, L4	L1, L2	L3, L4	L1, L2	L3, L4	L1, L2	L3, L4	L1, L2	L3, L4	L1, L2	L3, L4	L1, L2	L3, L4	L1, L2	L3, L4	L1, L2	L3, L4
EHK25AHCFF†	24	18.0	1	28.9/32.0	28.9/32.0	28.9/32.0	28.9/32.0	36.2/40.0	36.2/40.0	36.2/40.0	36.2/40.0	36.2/40.0	36.2/40.0	36.2/40.0	36.2/40.0	36.2/40.0	36.2/40.0	36.2/40.0	36.2/40.0	36.2/40.0	36.2/40.0	36.2/40.0	36.2/40.0	36.2/40.0	36.2/40.0	36.2/40.0	36.2/40.0	
EHK30AHCFF‡	30	22.5	1	36.2/40.0	36.2/40.0	36.2/40.0	36.2/40.0	45.3/50.0	45.3/50.0	45.3/50.0	45.3/50.0	45.3/50.0	45.3/50.0	45.3/50.0	45.3/50.0	45.3/50.0	45.3/50.0	45.3/50.0	45.3/50.0	45.3/50.0	45.3/50.0	45.3/50.0	45.3/50.0	45.3/50.0	45.3/50.0	45.3/50.0	45.3/50.0	

Notes:

- 1 Copper wire must be used. If other than uncoated (non-plated), 75° C ambient, copper wire (solid wire for 10 AWG and smaller, stranded wire for larger than 10 AWG) is used, consult applicable tables of the National Electric Code (ANSI/NFPA 70).
- * When used with Fan Coil model sizes 2400, 3600.
- ** When used with Fan Coil model sizes 4200, 4800, 6000
- † Includes blower motor amps of largest Fan Coil used with heater.
- ‡ Supplied as single phase, field convertible to 3-phase.
- ‡ Supplied as 3-phase, field convertible to single phase, single or multiple supply circuits.
- ‡ Length shown is as measured one way along wire path between unit and service panel for a voltage drop not to exceed 2%.

ACCESSORIES		
Part Number	Description	Use with Model Sizes
EBAC01DSC	Disconnect Kit	Use with All single phase Heaters 5kW thru 10kW
EBAC01NCB	Downflow Base Kit	24, 36, 48
EBAC04NCB		60
EBAC01DFS	Downflow Conversion Kit Slope Coil	36
EBAC02DFA	Downflow Conversion Kit A- Coil	24, 48, 60
EBAC01SPK	Single Point Wiring Kit	Only for use with 15kW and 20kW fused heaters
Square D® part #	Single Point Wiring Kit - Square D®	Only for use with EHK15AKB and EHK20AKB breaker heaters
QOU14100JBAF	Jumper Bar Assembly	
EBAC01FKM	Filter Kit (washable, box of 12)	24†, 48†
EBAC01FKL		36†, 48†
EBAC01FKX		60†
NASA00201FR	Standard Filter Rack (16 x 20 x 1 filter required)	24
NASA00301FR	Standard Filter Rack (20 x 20 x 1 filter required)	36, 48
NASA00401FR	Standard Filter Rack [quantity 2] (12 x 20 x 1 filter required)	60
EBAC01PLG	Power Plug Kit	ALL (Factory Installed)
EBAC01GSK	Horizontal & Downflow Gasket Kit	ALL (required for horizontal right and downflow)
EBAC01CTK	PVC Condensate Trap Kit (box of 50)	ALL
NAEA20101TX	TXV Kit, R- 22, Copper or Tin Coils Only	24, 36
NAEA20201TX		48
NAEA20301TX		60
NAEB20101TX	TXV Kit, R- 22, Aluminum Coils Only	2400AL, 3600AL
NAEB20201TX		4800AL
NAEB20301TX		6000AL

†Factory supplied

SELF CONFIGURING COMMUNICATING ELECTRIC HEATERS		
Part Number	Description	Use with Model Sizes
EHC09AKCN	9 kW, single phase, no internal circuit protection	ALL
EHC15AKF	15 kW, single phase, with fuses	ALL
EHC15AKB	15 kW, single phase, with circuit breakers	ALL
EHC20AKF	20 kW, single phase, with fuses	ALL
EHC20AKB	20 kW, single phase, with circuit breakers	ALL
EHC25AHCF	24 kW, supplied as 3 phase, field convertible to single phase, with fuses	ALL
EHC30AHCF	30 kW, supplied as 3 phase, field convertible to single phase, with circuit breakers	48 - 60

STANDARD ELECTRIC HEATERS		
Part Number	Description	Use with Model Sizes
EHK05AKN	5 kW, single phase, no internal circuit protection	ALL
EHK05AKB	5 kW, single phase, with circuit breakers	ALL
EHK07AKN	8 kW, single phase, no internal circuit protection	ALL
EHK07AKB	8 kW, single phase, with circuit breakers	ALL
EHK09AKCN	9 kW, supplied as single phase, field convertible to 3- phase, no internal circuit protection	36, 48, 60
EHK10AKN	10 kW, single phase, no internal circuit protection	ALL
EHK10AKB	10 kW, single phase, with circuit breakers	ALL
EHK15AKF	15 kW, single phase, with fuses	ALL
EHK15AKB	15 kW, single phase, with circuit breakers	ALL†
EHK15AHN	15 kW, 3- phase, no internal circuit protection	ALL†
EHK18AHN	18 kW, 3- phase, no internal circuit protection	48, 60
EHK20AKF	20 kW, single phase, with fuses	ALL†
EHK20AKB	20 kW, single phase, with circuit breakers	ALL†
EHK25AHCF	24 kW, supplied as 3- phase, field convertible to single phase, with fuses	48, 60
EHK30AHCF	30 kW, supplied as 3- phase, field convertible to single phase, with fuses	48, 60

† 15kW & 20kW are not recommended for specific heat pump applications, see AIRFLOW DELIVERY (CFM)